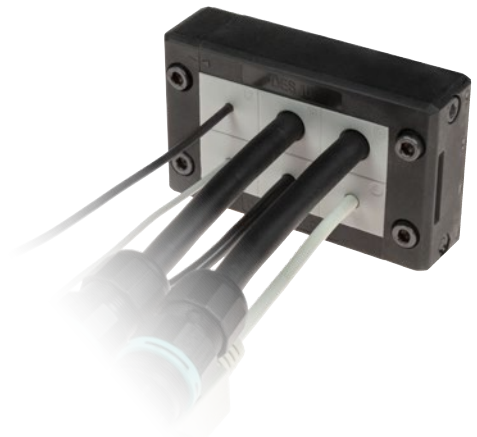


Model	Code	Some possible configurations	Cut-out [mm]	Pcs /pack
DES 10	1731010010		63 x 39	10
Upon request:	1731991020	Set of 4 mounting screws in AISI304 with Black Dacromet finishing		10

## Splittable frame for cables with and without connectors

- ▶ Multiple configurations in the same frame
- ▶ Frame screws in AISI304 Stainless Steel
- ▶ Integrated gasket
- ▶ Strain relief according to EN 62444
- ▶ Sturdy construction IK10
- ▶ IP66 and Nema 4X certified



The DES 10 cable entry system consists of a splittable frame designed to accommodate small (SPP), multiple (X) or large (SPG) inserts for cables in the same frame. The inserts can be freely positioned into the frame.

Thanks to the robust construction, the DES 10 is a long lasting product.

### Technical data

**Material:** PP+GF

**Flammability:** self-extinguishing acc. to UL94-V0

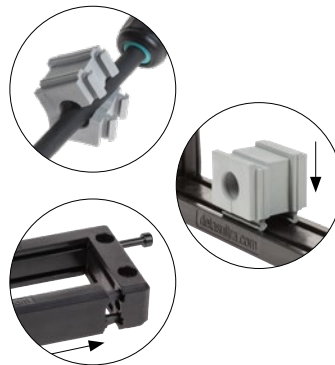
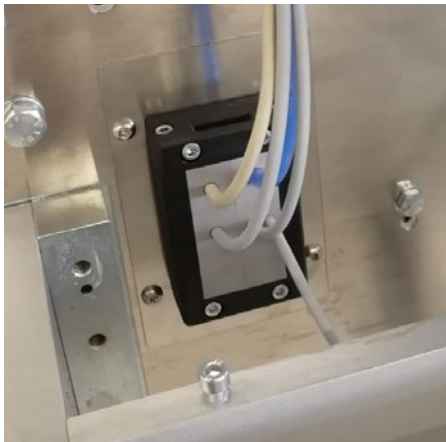
**Temperature:** -40°C... +155°C (static)

**Features:** halogens and silicones free

### Related products

- Inserts SPG and SPG M
- Inserts SPP, SPP K, SPP M, SPP F
- Inserts SPP 2x
- Inserts SPP 4x
- Flap frame

Hydraulic punch driver HY360



### Dimensions [mm]

