





Connector Series	
LSP	Standard LSP Series
LSPZ	LSP Zero Series (see Page 10)
LSPi	LSPi Series (see Page 9)

Contact Rating / Size	
500	500A / M12 Stud
512	500A / 120mm <sup>2</sup> Set Screw
800	800A / M12 Stud
8P2	800A / M12 Palm
895	800A / 95mm <sup>2</sup>
812	800A / 120mm <sup>2</sup>
815	800A / 150mm <sup>2</sup>
818	800A / 185mm <sup>2</sup>
824	800A / 240mm <sup>2</sup>
830	800A / 300mm <sup>2</sup>

Insulator Type	
P	Panel
L	Line
X	XL Line - M50 Gland
Y	XL Line - PG48 Gland
C	Lug Converter - M50 Gland
G	Lug Converter - PG48 Gland

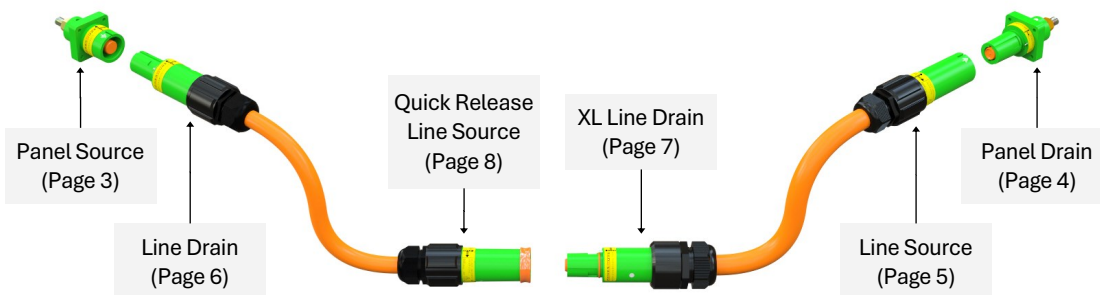
Connection Type	
S	Source
D	Drain
Q	Quick Release

Region / Phase						
	E	N	L1	L2	L3	
Europe	X	<b>XE</b>	<b>XN</b>	X1	X2	X3
Australia / NZ	Y	<b>YE</b>	<b>YN</b>	<b>Y1</b>	<b>Y2</b>	<b>Y3</b>
USA	Z	<b>ZE</b>	<b>ZN</b>	<b>Z1</b>	<b>Z2</b>	<b>Z3</b>
UK (Pre 2004 IEE)	U	<b>UE</b>	<b>UN</b>	<b>U1</b>	<b>U2</b>	<b>U3</b>
Canada	C	<b>CE</b>	<b>CN</b>	<b>C1</b>	<b>C2</b>	<b>C3</b>

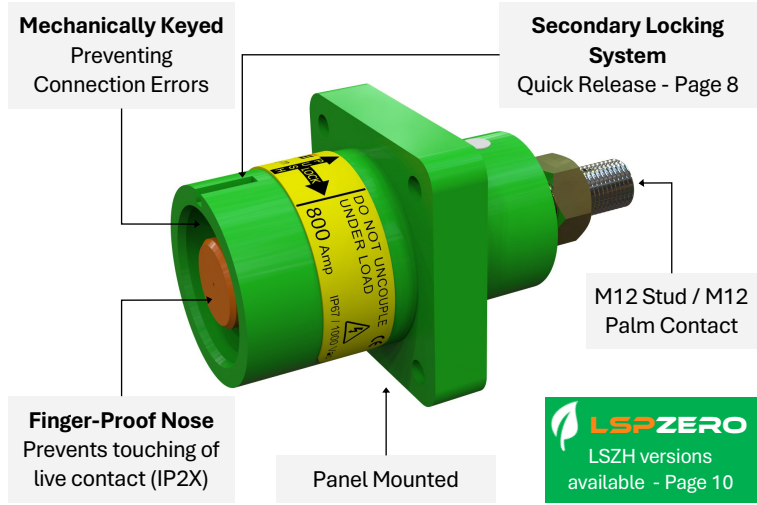
The Locking Single Pole (LSP) Series consists of a range of high current, single pole connectors in **500A** and **800A** models, suiting cables from 25mm<sup>2</sup> to 300mm<sup>2</sup>. Connectors are mechanically keyed and colour coded to eliminate connection errors and are equipped with a secondary locking mechanism and 'finger-proof' IP2X contacts for additional safety for the user.

The LSP Series is principally formed of Panel-Mounted and In-Line connectors with a range of termination options (Page 21) and insulator variants to fulfil the users requirements, as well as complimentary products to aid operators and facilitate integration with existing applications.

Our in-house design team are constantly updating and improving the product line, 2024 sees our newly launched LSPi Smart Connectors and updates to our flagship sequential mating units (SEQs). The team also apply their expertise to Special Projects and bespoke solutions for our customers (Page 20).



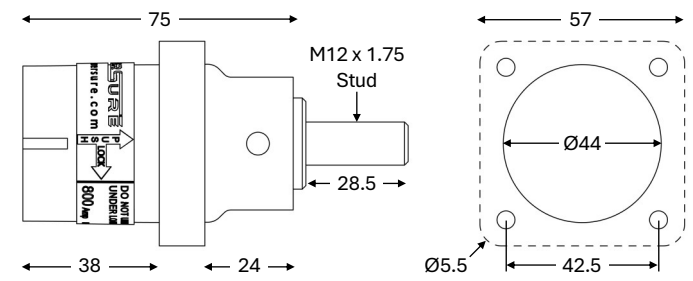
		Page
PS	Panel Source	03
PD	Panel Drain	04
LS	Line Source	05
LD	Line Drain	06
X	XL Line	07
Q	Quick Release	08
LSPi	LSPi Smart Connectors	09
Z	LSP Zero	10
SEQ	SEQ Units	11
CS	Lug Converter Source	13
CD	Lug Converter Drain	14
LL	LugLink	15
LND	LSP Network Devices	16
	LSP Protective Caps	17
	LSP Accessories	18
	Panel Mounting Plates	19
	Special Projects	20
	Contact Overview	21
	Tech References	22



Model Shown - LSP 800 PS XE



Principal Dimensions (mm)



Related Products



**Quick Release**  
For rapid or regular LSP uncoupling (Page 8)

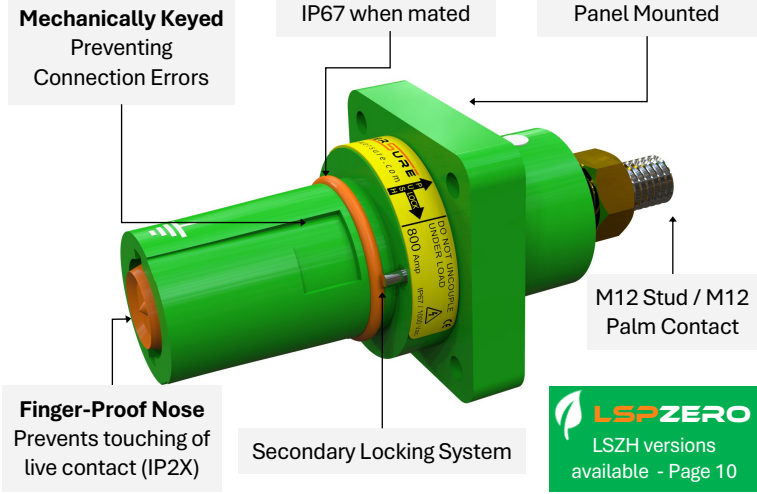


**SEQ Units**  
Sequentially locking units with superior features (Page 11)



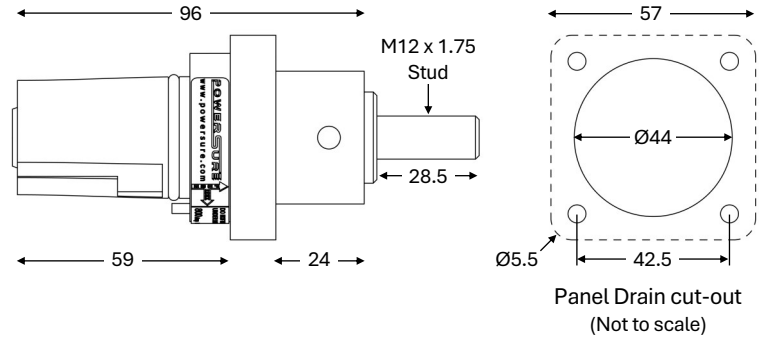
**Connector Cuff**  
Quick and easy system for extra security (Page 18)

Ordering Codes (see Page 1)		LSP 500 PS --	LSP 800 PS --	LSP 8P2 PS --
Max. Current Rating	A	500	800	800
Suitable Cable Size	mm <sup>2</sup>	25 to 150	185 to 300	25 to 300
Contact Type (Page 21)		M12 Stud	M12 Stud	M12 Palm
Voltage Rating	Vac/Vdc	1000 / 1500		
Operating Temperature	°C	-35 to 125		
IP Rating (When Mated)		IP67		
Flammability		UL94 - V0		

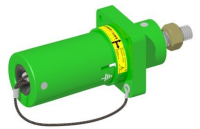


Model Shown - LSP 800 PD XE

Principal Dimensions (mm)



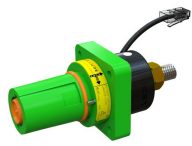
Related Products



**Protective Caps**  
Dustcaps (IP54) & IP67 Caps (IP67) available (Page 17)

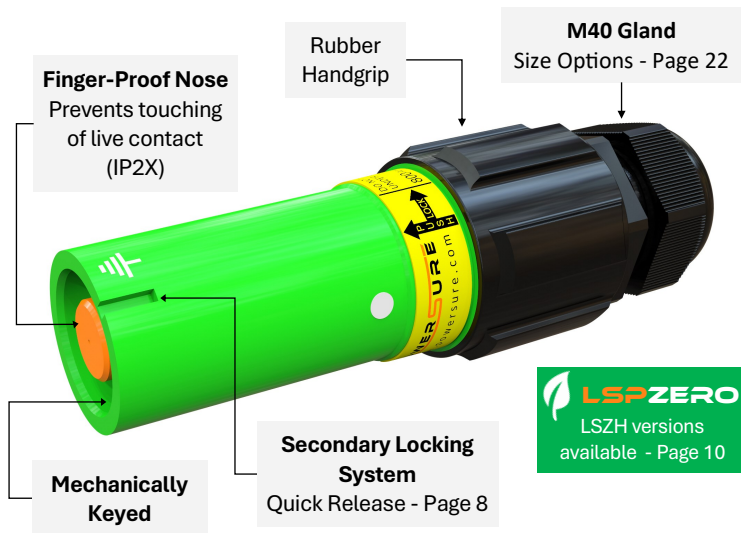


**Phase Converter**  
In-line & elbow phase & gender converters (Page 16)



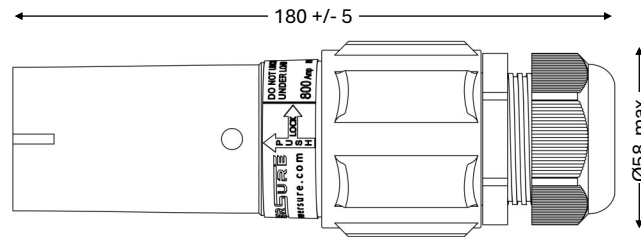
**LSPi Connectors**  
Smart connectors with Multi Stage Monitoring Systems (Page 9)

Ordering Codes (see Page 1)		LSP 500 PD --	LSP 800 PD --	LSP 8P2 PD --
Maximum Current Rating	A	500	800	800
Suitable Cable Size	mm <sup>2</sup>	25 to 150	185 to 300	25 to 300
Contact Type (Page 21)		M12 Stud	M12 Stud	M12 Palm
Voltage Rating	Vac/Vdc	1000 / 1500		
Operating Temperature	°C	-35 to 125		
IP Rating (When Mated)		IP67		
Flammability		UL94 - V0		



Model Shown - LSP 824 LS XE

Principal Dimensions (mm)



Related Products



**Quick Release**  
For rapid or regular LSP uncoupling (Page 8)



**Phase Converters**  
In-line & elbow phase & gender converters (Page 16)

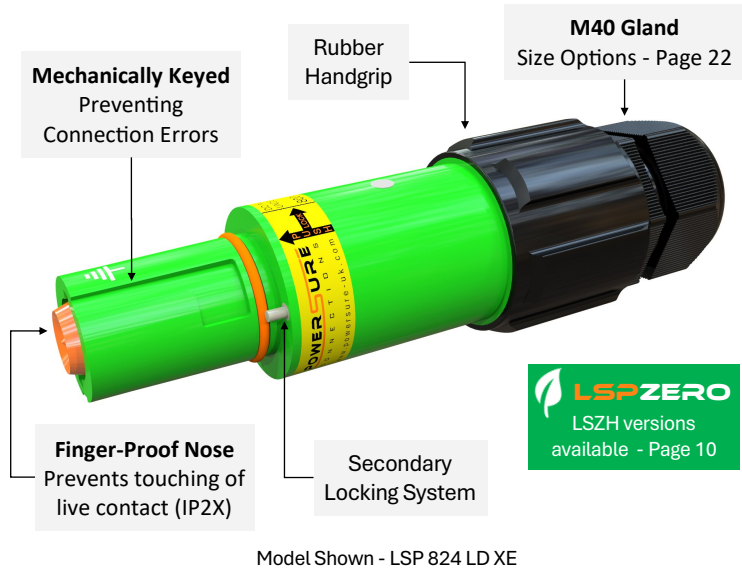


**Protective Caps**  
Dustcaps (IP54) & IP67 Caps (IP67) available (Page 17)

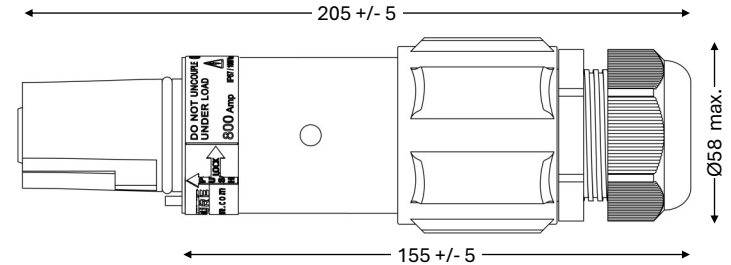
Ordering Codes (see Page 1)		LSP 512 LS --	LSP 8-- LS --
Maximum Current Rating	A	500	800
Suitable Cable Size	mm <sup>2</sup>	25 <sup>A</sup> to 150	95 to 300
Contact Type (Page 21)		Set Screw	Hex Crimp
Gland Size (Page 22)		M40A	M40B
Gland Clamping Range	mm	9 <sup>B</sup> to 28	22 to 32
Voltage Rating	Vac/Vdc	1000 / 1500	
Operating Temperature	°C	-35 to 125	
IP Rating (When Mated)		IP67	
Flammability		UL94 - V0	

<sup>A</sup> Reduction Ferrule kit required for 500A contacts with cable <120mm<sup>2</sup> - See page 18

<sup>B</sup> Gland fitted with Reduction Bush - See page 22 for Gland Overview



## Principal Dimensions (mm)



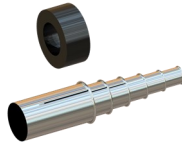
## Related Products



**Connector Cuff**  
Quick and easy  
system for extra  
security  
(Page 18)



**XL Connectors**  
In-line connector  
for cable of  
OD > 32mm  
(Page 7)

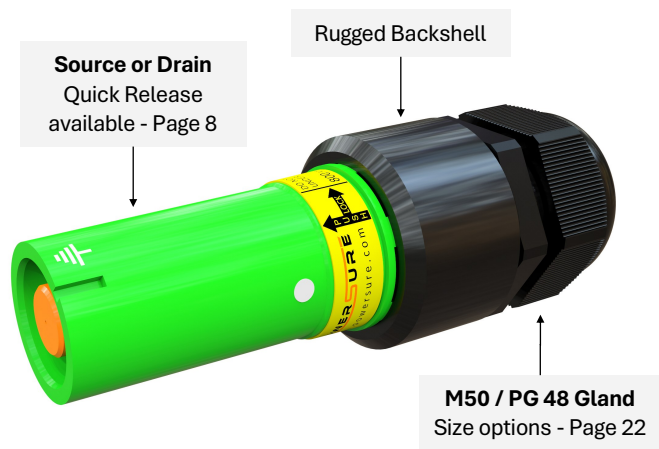


**Reduction Kits**  
For 500A in-line  
LSP connectors -  
cables < 120mm<sup>2</sup>  
(Page 18)

Ordering Codes (see Page 1)		LSP 512 LD --	LSP 8-- LD --
Maximum Current Rating	A	500	800
Suitable Cable Size	mm <sup>2</sup>	25 <sup>A</sup> to 150	95 to 300
Contact Type (Page 21)		Set Screw	Hex Crimp
Gland Size (Page 22)		M40A	M40B
Gland Clamping Range	mm	9 <sup>B</sup> to 28	22 to 32
Voltage Rating	Vac/Vdc	1000 / 1500	
Operating Temperature	°C	-35 to 125	
IP Rating (When Mated)		IP67	
Flammability		UL94 - V0	

<sup>A</sup> Reduction Ferrule kit required for 500A contacts with cable <120mm<sup>2</sup> - See page 18

<sup>B</sup> Gland fitted with Reduction Bush - See page 22 for Gland Overview



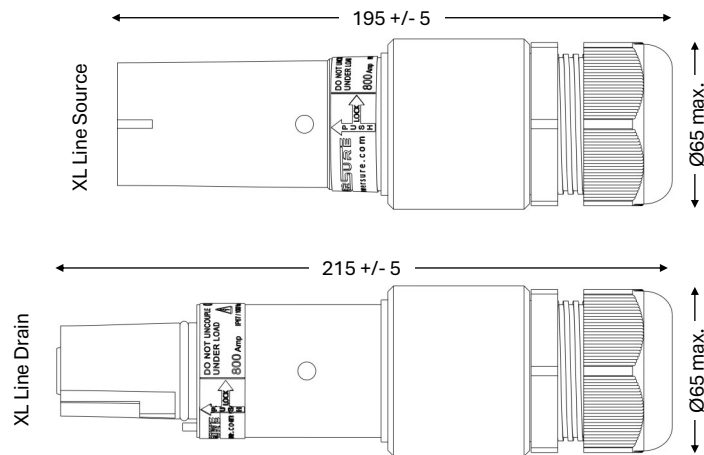
Model Shown - LSP 830 XS XE

Powersure XL Line Connectors are primarily for use with 240mm<sup>2</sup> or 300mm<sup>2</sup> cables where the outer diameter is greater than 32mm<sup>^</sup>.

Available as Source or Drain connection and fitted with a rugged backshell to enable a larger M50 or PG48 Gland, while retaining the features of standard LSP Line connectors (Page 5 & 6).

<sup>^</sup> See page 22 for Gland Overview

Principal Dimensions (mm)



Ordering Codes (see Page 1)		LSP 8-- XS --	LSP 8-- XD --	LSP 8-- YS --	LSP 8-- YD --
Connection		Source	Drain	Source	Drain
Max. Current Rating	A	800		800	
Gland Size (Page 22)		M50		PG48	
Gland Clamping Range	mm	22 <sup>A</sup> to 35		28 <sup>A</sup> to 44	
Voltage Rating	Vac/Vdc		1000 / 1500		
Operating Temperature	°C		-35 to 125		
IP Rating (When Mated)			IP67		
Flammability			UL94 - V0		

### Sliding Quick Release Collar



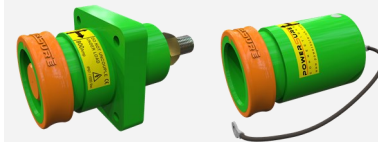
Replaces a Release key, compressing secondary locking pin to allow decoupling (see Coupling Cycle) for applications requiring regular or rapid decoupling. Colour coded collars available.



Optional Locking Grub Screw

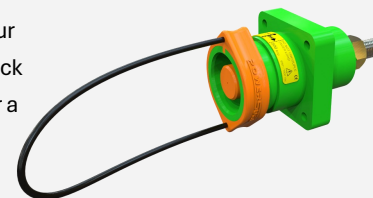
### Panel Source and Line Source

As standard options, available for any source connection.

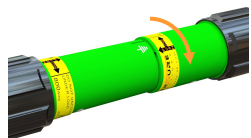


### Bespoke options available

Bespoke solutions can be created by our Special Projects team. This "looped" Quick Release Panel source was designed for a customer to allow decoupling of connectors in a confined space.



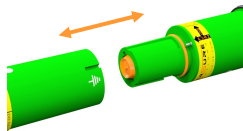
### Standard LSP Series Coupling Cycle



Push and rotate connectors until secondary locking pin engages, locking connectors.



Compress secondary locking pin using Release Key (Page 18).

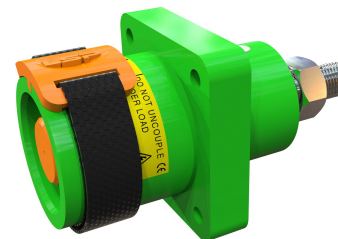


Rotate and uncouple connectors.  
**Do not uncouple connectors under load**

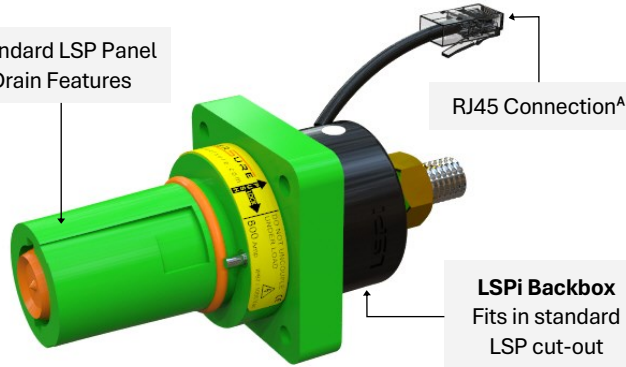
### ELASTIKEY

An alternative to Quick Release systems, ELASTIKEYs offer a simple and economic solution.

A sliding release keys are retained by elastic strap with no damage or modifications to the connector.



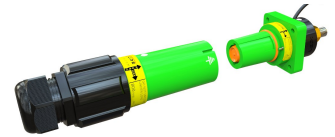
Standard LSP Panel Drain Features



Model Shown: LSPi 800 PD XE  
<sup>A</sup>Cable Length Shown Demonstration Only

LSPi Multi Stage Monitoring System

**Stage 1 - Red**  
 Connectors are uncoupled.



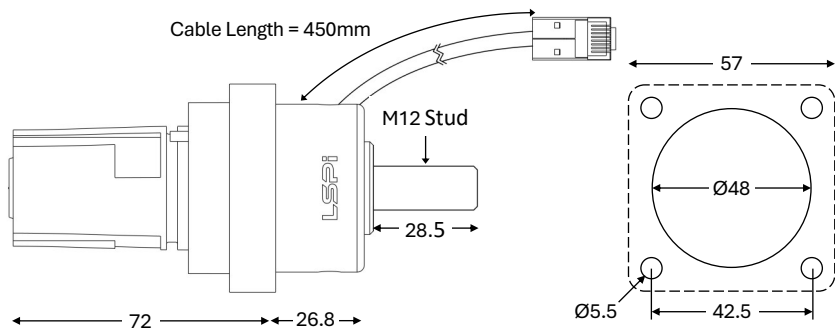
**Stage 2 - Yellow**  
 Connectors are coupled but not locked.  
 Turn connector 45° to lock.



**Stage 3 - Green**  
 Connectors are coupled and secondary locking pin is engaged:  
 Connectors are locked.



Principal Dimensions (mm)



LSPi Panel Drain cut-out  
 (Not to scale)

Monitoring System

Max. Switching Current	1A
Voltage Rating	24 VAC / VDC
Connection	RJ45
Maximum Temperature	80°C
IP Rating	IP65



## LOW SMOKE ZERO HALOGEN BY POWERSURE

Low Smoke Zero Halogen (LSZH) refers to the behaviour of materials when combusted, specifically the volume of smoke and the toxicity of the emissions.

Although all LSP Series connectors meet the flammability requirements of UL94 to the highest level, a new compound has been developed for the insulating body of the connector that meets the most stringent requirements of EN 45545-2 without compromising other elements of the product, creating the **LSP ZERO** range of connectors.

### EN 45545-2 2015 - Fire Protection of Railway Vehicles / Fire Behaviours of Materials and Components

LSP Zero connectors have been developed primarily for use in the railway applications, and therefore pass the most stringent requirements (Hazard Level 3 -HL3) within the standard for both Internal (Table R22) and External (Table R23) applications.



Conditions	Table	HL1	HL2	HL3
Limiting Oxygen Index (LOI)	R22 / R23	≥ 28%	≥ 28%	≥ 32%
Smoke Density (Ds max) (25kW/m <sup>2</sup> - Flaming)	R22	≤ 600	≤ 300	≤ 150
	R23		≤ 600	≤ 300
Smoke Toxicity CIT-NLP	R22	≤ 1.2	≤ 0.9	≤ 0.75
	R23		≤ 1.8	≤ 1.5



**Secure**

Connectors are locked in place using a reliable single point locking system with barrel options to suit requirements.

**Sequential Mechanism**

SEQ Units feature a Sequential Locking mechanism, ensuring a First-Mate-Last-Break (FMLB) connection for LSP Series connectors.



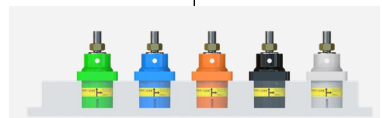
**Region and Phase Options**

SEQ Units are available in 4 or 5 pole configurations in our primary Regions (Page 1) as standard with customised and bespoke options available on request.

Source and Drain versions available



Full Mounting Flange



**Compact**

Using standard LSP Panel connectors as a base, our designers created the most compact unit possible, while retaining the key LSP Series features.

**LSP Features Retained**

- ✓ 500A / 800A Rated
- ✓ Mechanically Keyed
- ✓ IP67 When Mated
- ✓ Finger Proof (IP2X)

**LSPi Monitoring Systems**

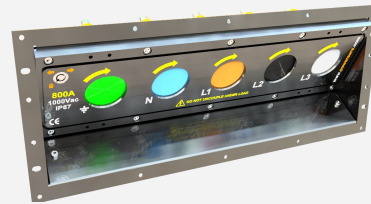
SEQ Units are available with LSPi Multi Stage Monitoring hardware installed (LSPi - Page 9)





### IP67 Door Kits

IP Door kits offer a bolt on solution for external mounting or increased ingress protection. Doors can be hinged from upper and lower edge and include all required hardware and rubber gaskets .



### Mounting Adapters

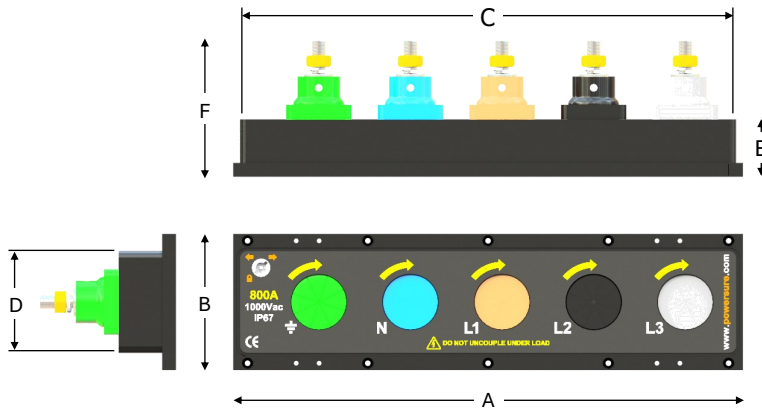
Mounting adapters can be supplied to facilitate mounting SEQ units in flat (3U) or 30° down-angle (4U) configurations.



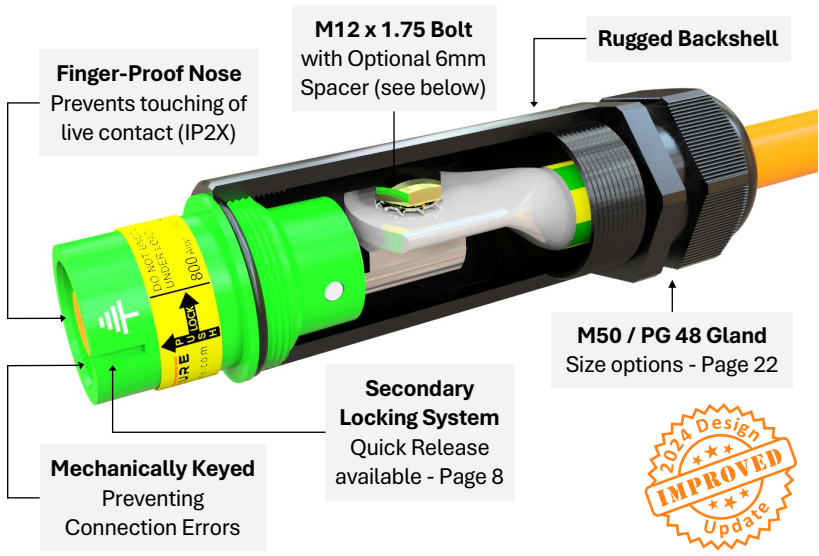
### Contact Options

SEQ Units are available as both **500A** and **800A** rated variations and can be fitted with any standard LSP Series contact to suit user requirements (Contact Overview - Page 21) .

### Principal Dimensions (mm)



	Source	Drain
<b>A</b> Facia Width	445.0	445.0
<b>B</b> Facia Height	118.9	118.9
<b>C</b> Backbox Width	433.0	433.0
<b>D</b> Backbox Height	88.9	88.9
<b>E</b> Facia + Backbox Depth	50.0	72.0
<b>F</b> Total Depth	118.6	140.6



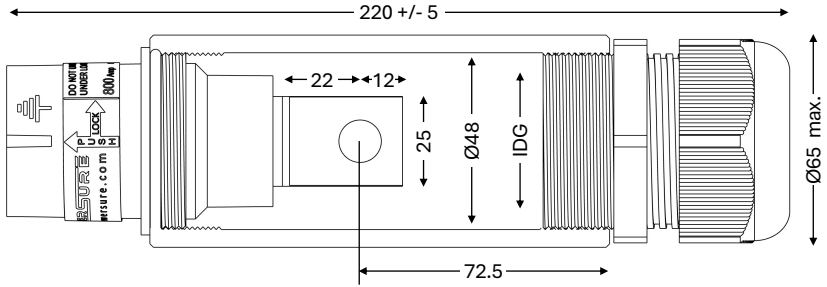
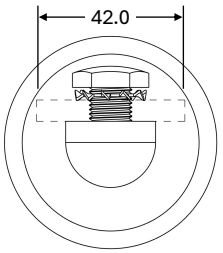
Model Shown - LSP 8P2 CS XE

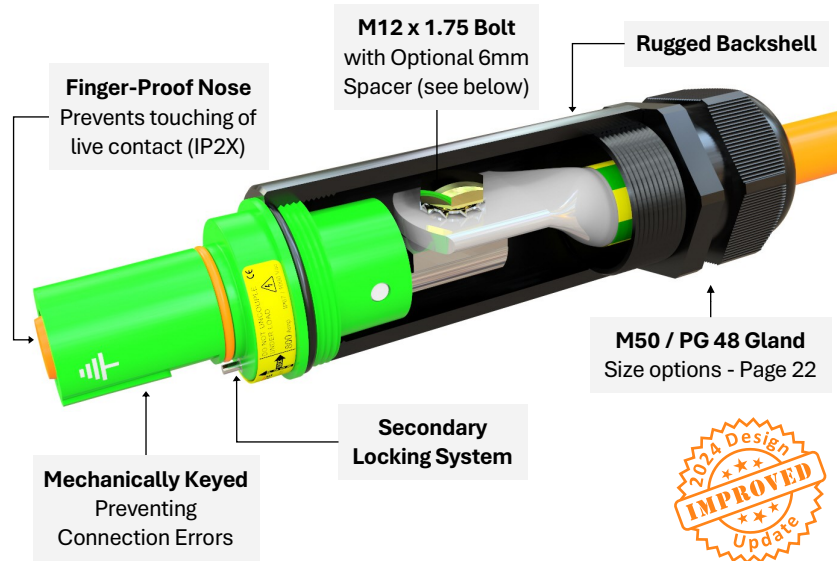
Ordering Codes (see Page 1)	LSP 8P2 CS --	LSP 8P2 GS --	
Maximum Current Rating	A	800	800
Gland Size (Page 22)	M50	PG48	
Gland Clamping Range	mm	22 <sup>A</sup> to 35	28 <sup>A</sup> to 44
Gland Min. Diameter (IDG)	mm	39	45
Contact Type (Page 21)	M12 Bolt	M12 Bolt	
Voltage Rating	Vac/Vdc	1000 / 1500	
Operating Temperature	°C	-35 to 125	
IP Rating (When Mated)		IP67	
Flammability		UL94 - V0	

<sup>A</sup>Gland fitted with Reduction Bush - See page 22 for Gland Overview

Principal Dimensions (mm)

**Optional 6mm Spacer**  
Improves the alignment of lug and gland for larger cables. (Reduces max. lug palm width to 42mm)





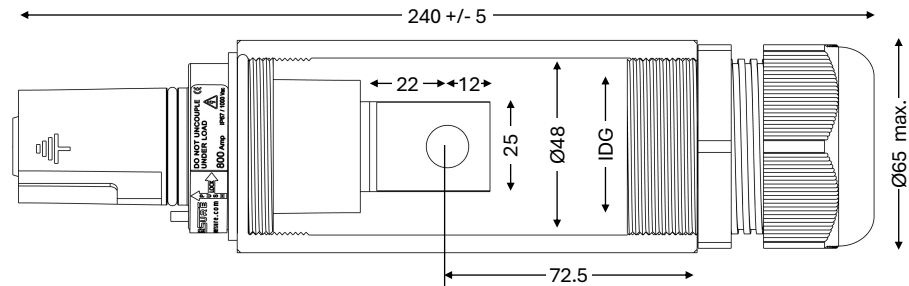
Model Shown - LSP 8P2 CD XE



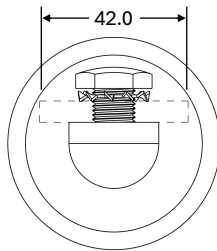
Ordering Codes (see Page 1)	LSP 8P2 CD --	LSP 8P2 GD --	
Maximum Current Rating	A	800	800
Gland Size (Page 22)	M50	PG48	
Gland Clamping Range	mm	22 <sup>A</sup> to 35	28 <sup>A</sup> to 44
Gland Min. Diameter (IDG)	mm	39	45
Contact Type (Page 21)	M12 Bolt	M12 Bolt	
Voltage Rating	Vac/Vdc	1000 / 1500	
Operating Temperature	°C	-35 to 125	
IP Rating (When Mated)		IP67	
Flammability		UL94 - V0	

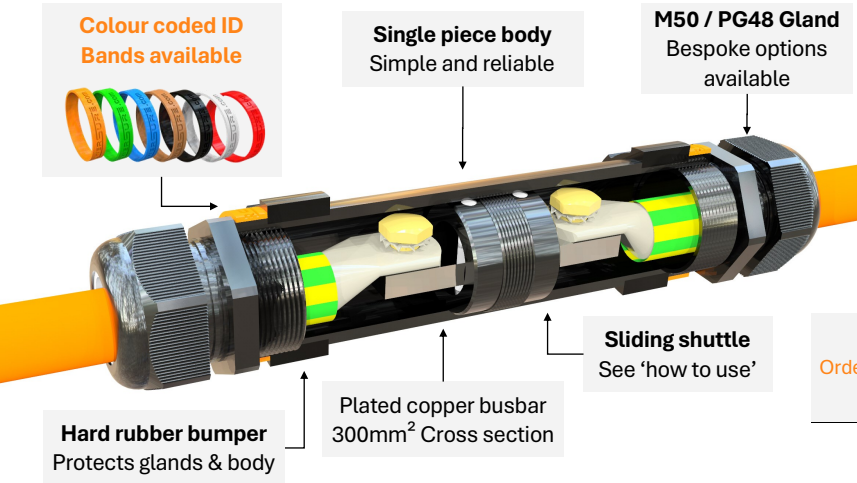
<sup>A</sup>Gland fitted with Reduction Bush - See page 22 for Gland Overview

## Principal Dimensions (mm)

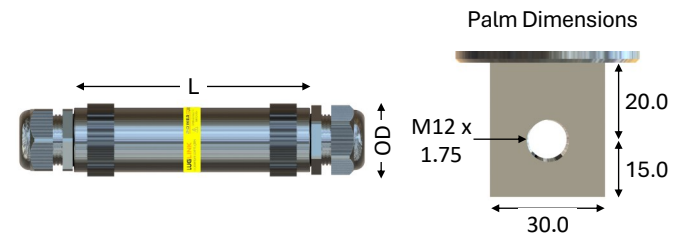


**Optional 6mm Spacer**  
Improves the alignment of lug and gland for larger cables.  
(Reduces max. lug palm width to 42mm)





Principal Dimensions (mm)

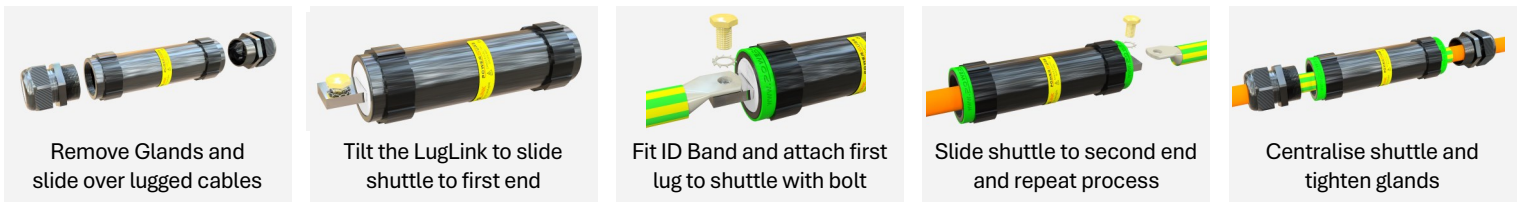


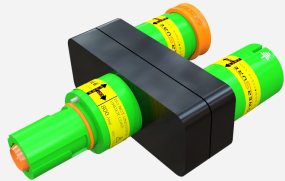
Ordering Code	Outside Diameter	Length	Gland Size	Gland Clamping Range	
	OD (mm)	L (mm)		mm	Ref. Cable <sup>A</sup>
LND LL55 220	60	220	M50 w. Reduction Bush (Included)	20 to 30	120mm <sup>2</sup> to 300mm <sup>2</sup>
LND LL88 220	60	220	M50	28 to 38	300mm <sup>2</sup> to 400mm <sup>2</sup>
LND LL88 220	65	250	PG48	34 to 44	400mm <sup>2</sup> +

<sup>A</sup> Cable for reference purposes = **SUREFLEX** Double Insulated - See Page 22

LugLinks feature a sliding shuttle to facilitate the connection of lugged cables, where the features of LSP Lug Converter connectors (Page 17 & 18) are not required. The simple design provides safety and reliability, while allowing bespoke versions to be produced (Special Projects - Page 20).

How to use a LugLink





### LSP Splitter

Available as **500A** or **800A** rated versions, with any combination of LSP Series connection, useful for safely splitting phases. LSP Splitters are IP67 sealed when mated and can be supplied with Protective Caps (Page 19).



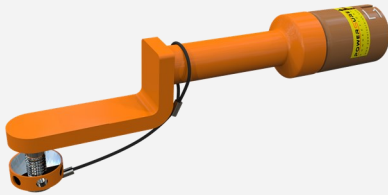
### LSP Gender / Phase Converters

The safe and reliable solution to convert the phase or gender of an LSP Series connector when the situation calls for it. Converters are available as **800A** Rated.



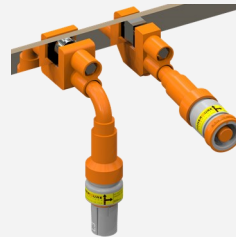
### LSP Right Angled Connectors

A useful solution for space-limited applications or to reduce mechanical loads in panels. Available with any combination of LSP Series connection, or with a M50 Gland for a **800A** down-angle connector configuration.



### LSP Rotary Clamps

Enables a fully insulated LSP Series connection to slotted or drilled low voltage busbars. The rotary clamp wheel is tightened using an insulated spanner bar.



### Insulated G Clamps

Provides a connection to low voltage busbar, combining any LSP Series connection with a choice of Standard or Mini Clamp and Short, Long or Right-Angle arm.



### Insulated Underground Connector

Creates an LSP Series connection with solid or unstranded underground cables. A set screw termination is tightened using an insulated ratchet tool

### Locking Caps

Provide IP67 ingress protection to LSP Series connectors when not in use. Locking Caps utilise the LSP secondary locking system and are phase keyed and colour coded. Supplied with a Short or Long tether to affix to connector.

### Short Tether

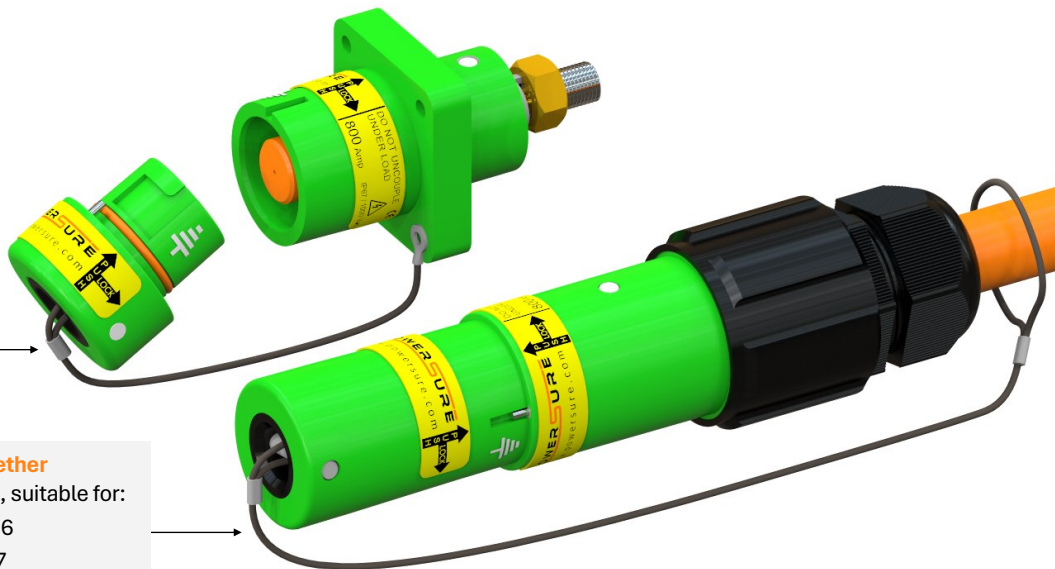
Fitted with M5 ring crimp, suitable for:

- Panel - Page 3 & 4

### Long Tether

Fitted with loop, suitable for:

- Line - Page 5 & 6
- XL Line - Page 7
- Lug Converter - Page 13 & 14



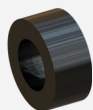
### Dustcaps

Provide IP54 ingress protection for LSP Series connectors when not in use with a simple push/ pull fitment. Supplied with a Short or Long tether to affix to connector.

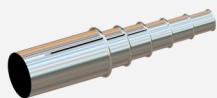
Protective Cap Type	Ingress Protection	Tether	Product Code	
			To Fit Source	To Fit Drain
Dustcap	IP54	Short	LSP AHD PS AA	LSP AHD PD AA
		Long	LSP AHD LS AA	LSP AHD LD AA
Locking Cap	IP67	Short	LSP AHL PS --	LSP AHL PD --
		Long	LSP AHL LS --	LSP AHL LD --
Quick Release Locking Cap	IP67	Short	N/A	LSP AHL PQ --
		Long	N/A	LSP AHL LQ --

### Reduction Kits

For use with in-line LSP Series connectors and cables of less than 120mm<sup>2</sup>. Ferrules cumulatively increase the conductor diameter to fit 500A Set Screw contacts, while reduction bushes decrease the gland clamping diameter to fit smaller cables. (Gland Overview - Page 22)



Reduction Bush



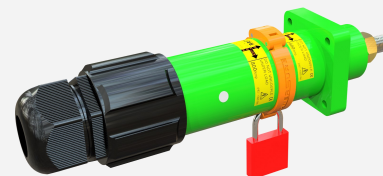
Reduction Ferrules

		Pack of 10 Product Code	Reduction Kits Contents	
			Small Kit	Large Kit
			LSP ACF KS	LSP ACF KL
Reduction Bushes	16mm	REDBUS16K	✓	
	19mm	REDBUS19K		✓
Reduction Ferrules	16mm <sup>2</sup>	LSP ACFLA 16K		
	25mm <sup>2</sup>	LSP ACFLA 25K	✓	
	35mm <sup>2</sup>	LSP ACFLA 35K	✓	
	50mm <sup>2</sup>	LSP ACFLA 50K	✓	
	70mm <sup>2</sup>	LSP ACFLA 70K	✓	✓
	95mm <sup>2</sup>	LSP ACFLA 95K	✓	✓
	120mm <sup>2</sup>	LSP ACFLA 12K		



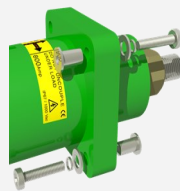
### Release Keys / ELASTIKEYS

Facilitate decoupling of LSP Series connectors by depressing the secondary locking pin. ELASTIKEYS are retained, offering a simple alternative to Quick Release connectors (Page 8).



### Connector Cuffs

Developed by our Special Projects team (Page 20), Connector Cuffs prevent unauthorised decoupling of LSP Series connectors for extra safety, particularly in public areas.



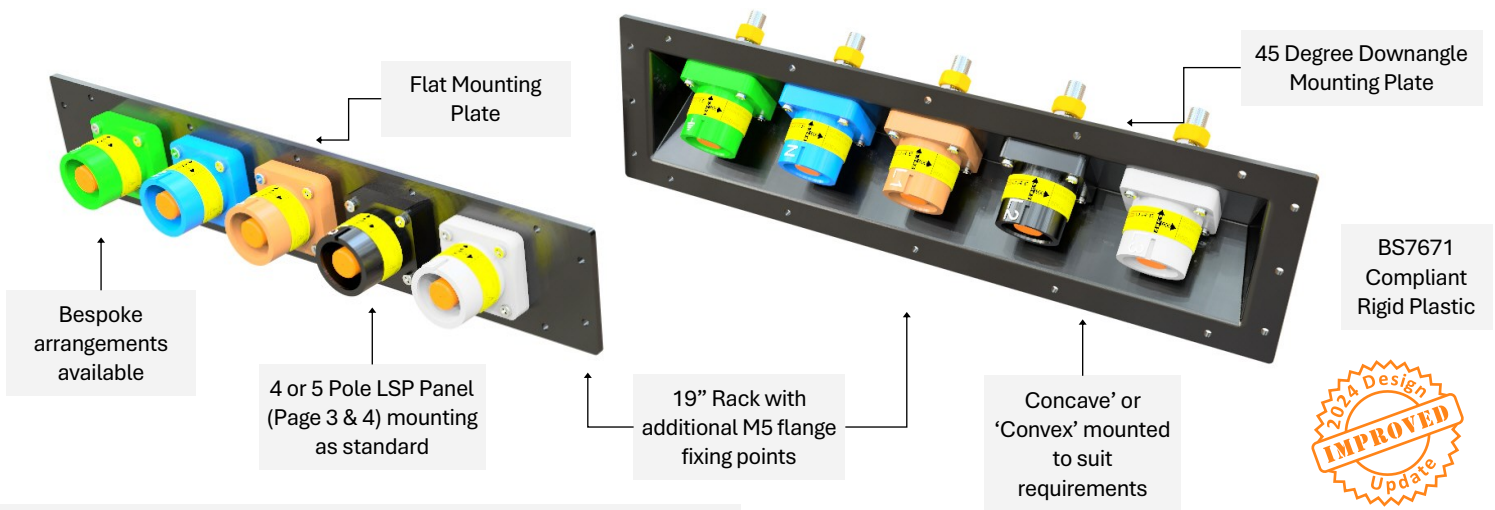
### Panel Mounting Kit

For use in front and 'thru' mounting applications. Kit includes M4 Bolts, washers, spring washers and push-in ferrules.

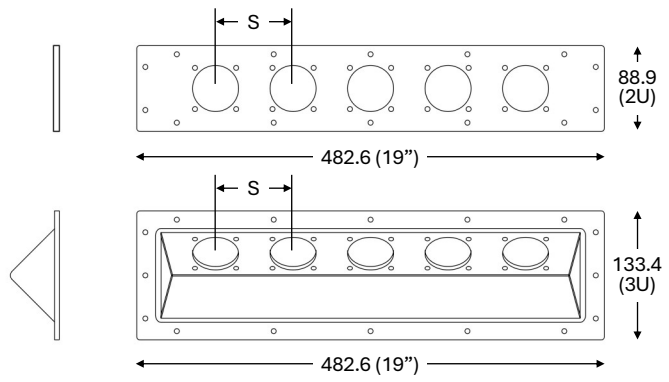


### Spares / Replacement parts

As Powersure manufacture or assemble all components of the LSP Series in-house, we are able to provide an unrivalled repair or replacement service.



Principal Dimensions (mm)



Product Code	Type	Arrangement	Material	Connector Spacing (S)
LSP AMF 19 4P	Flat	4 x LSP Panel Mount	Black Acetal	100
LSP AMF 19 5P	Flat	5 x LSP Panel Mount	Black Acetal	80
LSP AMD 19 4P	45 Deg. Downangle	4 x LSP Panel Mount	Black ABS	100
LSP AMD 19 5P	45 Deg. Downangle	5 x LSP Panel Mount	Black ABS	80
LSP AMD 19 --	45 Deg. Downangle	Bespoke	Black ABS	-

# POWERSURE SPECIAL PROJECTS

FROM CONCEPT TO CONNECTION  
projects@powersure.com

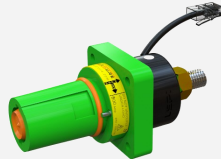
The Powersure Special Projects team is comprised of experienced mechanical and electrical design engineers, who specialise in delivering bespoke solutions for a range of challenges.

Our Concept to Connection pathway allows customers to customise their project scope from a quick turnaround concept and presentation, to full product run with testing and after sales support.

## Powersure Special Projects Case Studies

### #2401 - LSPi Smart Connectors

**Brief** An increase in popularity of component monitoring systems has prompted a demand for an LSP Panel connector with connection state monitoring.



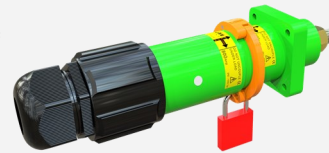
**Concept** The limitations of current options were noted, such as insufficient information about the mating state and creating mounting difficulties from accommodating the additional components.

**Connection** The team created a Multi Phase connection system which indicates when the LSP connectors are both mated, and locked. The hardware was neatly packaged in a compact 'backpack' which can be mounted in a near-standard panel cutout (44Ø to 48Ø), with space allocated for a temperature sensor and auxillary inputs and outputs.

LSPi Smart Connectors - Page 9

### #1909 - Connector Lock

**Brief** Our client required a cost effective means of locking and preventing the uncoupling of connectors once mated, without modifying or damaging the connectors.



**Concept** Initial concepts ranged from a simple clamp design to integrated combination lock, presented to the client as 3D rendering with cost and lead estimates.

**Connection** The chosen design allows a choice of locking options (padlock, anti tamper tag etc), and also doubles as a release key once removed. The product was prototyped and developed before manufacture and supply to the client. As the client agreement did not require exclusivity, Connector Cuffs are now openly available to buy. (Page 18).

## Concept to Connection Pathway



**Stage 1**  
Concept Presentation



**Stage 2**  
Development



**Stage 3**  
Prototyping



**Stage 4**  
Concept Presentation

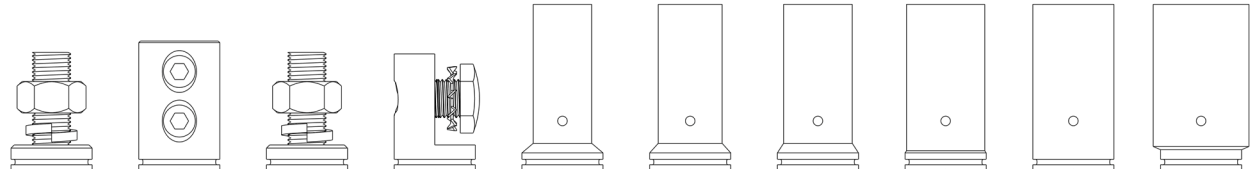


**Stage 5**  
Production and Supply



**Stage 6**  
After Sales Support

Images for reference only - Please contact sales@powersure.com for dimensions



Contact Code		500	512	800	8P2	895	812	815	818	824	830
Current Rating		500A			800A						
Suitable Cable Size	mm <sup>2</sup>	25 to 120	25 <sup>A</sup> to 150	150 to 300	25 to 300	95	120	150	185	240	300
	AWG					3/0	4/0	300MCM	350MCM	500MCM	600MCM
Current Rating		500A			800A						
Voltage Rating		1000Vac / 1500Vdc			1000Vac / 1500Vdc						
Operating Temp.		-35°C to 125°C			-35°C to 125°C						
Connection Type		Stud	Set Screw	Stud	Palm	Hex Crimp	Hex Crimp	Hex Crimp	Hex Crimp	Hex Crimp	Hex Crimp
Connection Size		M12 x 1.75 x 28.5mm	ID = 19.5mm	M12 x 1.75 x 28.5mm	M12 x 1.75	ID = 13.5mm	ID = 15.2mm	ID = 16.7mm	ID = 19.2mm	ID = 21.1mm	ID = 23.4mm
Standard Insulator <sup>B</sup>	Panel	✓		✓	✓						
	Line		✓			✓	✓	✓	✓	✓	✓
	XL Line									✓	✓
	Lug Converter				✓						

<sup>A</sup> Reduction ferrule kit required for cable <120mm<sup>2</sup> - See page 18

<sup>B</sup> Non-standard combinations available on request.



Powersure Connections specialise in the design, manufacture and supply of electrical connectors for use in the most demanding professional environments.

Our customer base consists of companies involved in temporary and fixed power installations for light and sound, military, railway, industrial and offshore applications.

All of our connectors are designed with an emphasis on durability and reliability and manufactured to the highest quality, with innovative features based on many years of experience in the power and connection industries.

Every component of our connectors is assembled in-house, giving us full control of the production line, ensuring quality and full traceability. It has also allowed us to evolve our facility with specialist equipment and systems, which are also utilised in the manufacture of our fitted leads and assembled units, to individual customer specifications.

We also have unrivalled experience in creating modified and fully bespoke products, catering to the specific requirements of our customers and will always continue to develop our products and product range to stay one step ahead of the market's needs.

Visit [www.powersure.com](http://www.powersure.com) for more information.

