



# GROUP 7

Frames and plates ATEX

**Zone 2 and 22**





# DES ATEX



Splittable frames for cables with and without connectors



The DES cable entry system consists of a splittable frame designed to accommodate small (SPP), multiple (X) or large (SPG) grommets for cables with and without connectors. The grommets can be freely positioned into the frame.

The overmolded gasket guarantees faster installation times and the complete V0 self-extinguishing of the system.

**DES ATEX series can be used in zone 2 and 22.**


**Material:** PP+GF, halogens and silicones free

**Flammability:** self-extinguishing acc. UL94-V0

**Temperature:** -40°C... +155°C (static)

## RELATED PRODUCTS

- SPP grommets (from page 46)
- SPG grommets (from page 52)
- HY360 hydraulic punch driver (page 139)
- PF cable entry system plates (page 140)

Model	Code	Dimensions (mm)	Max. cut-out (mm)	Pcs (/pack)
DES 24A	1731310024	 146 x 61	112 x 39	
DES 16A	1731310016	 120 x 61	86 x 39	
DES 10A	1731310010	 99 x 61	63 x 39	
DES QA	1731310008	 74 x 61	40 x 39	
<b>NEW</b> DES L1A	1731310001	 54,3 x 41	21 x 18	10
DES L2A	1731310002	 74 x 41	40 x 18	
DES L3A	1731310003	 99 x 41	63 x 18	
DES L4A	1731310004	 120 x 41	86 x 18	
DES L5A	1731310005	 146 x 41	112 x 18	
Upon request	1731991020	Set of 4 mounting screws in AISI304 with Black Geomet finishing		10

\* Indoor only



IP66

NEMA 12, 4X\*

UL TYPE 12, 4X



ECOLAB



IK10





# DESPRED ATEX



## Divisible cable gland with locknut

### FEATURES

- Frame screws in AISI304 Stainless Steel with Black Dacromet finishing
- M25, M32 and M63 metric sizes
- IP66 and Nema 4X\* certified
- Strain relief according to EN 62444
- Sturdy construction IK10
- Integrated gasket

The DESPRED series are divisible cable glands for metric threads.

The 63 model can be used with small, multiple and large grommets for cables up to 34 mm diameter. With multiple grommets it is possible to accommodate up to 16 cables. Future cable size changes can also be easily accommodated using various grommets.

**DESPRED ATEX series can be used in zone 2 and 22.**

**Material:** PP+GF, halogens and silicones free

**Flammability:** self-extinguishing acc. to UL94-V0

**Temperature:** -40°C... +155°C (static)

### RELATED PRODUCTS

- SPP grommets (from page 46)
- SPG grommets (from page 52)
- HY360 hydraulic punch driver (page 139)
- Divisible locknuts (page 39-40)

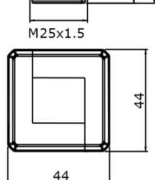
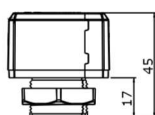


Model	Code	Some possible configurations	Cut-out Ø (mm)	Pcs (/pack)
DESPRED 25A	1731350025		25,5	10
DESPRED 32A	1731350032		32,5	
DESPRED 63A	1731350063		63,5	

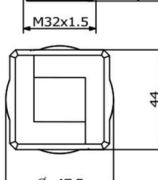
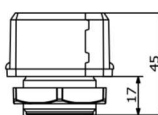
### Dimensions (mm)



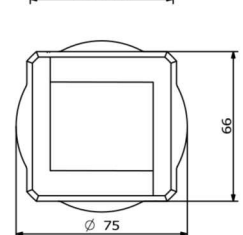
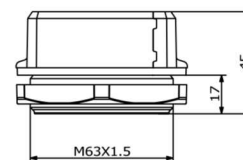
DESPRED 25A



DESPRED 32A



DESPRED 63A



\* Indoor only



IP66

NEMA 12, 4X\*

UL TYPE 12, 4X



ECOLAB



IK10





# SPP ATEX



## DES grommets - small: single, double and quadruple



### FEATURES

- Grommets for cables from 2 to 17 mm diameter
- "Blind" version available
- Grey and black colours available
- UL94-V0 for both colours

The SPP grommets enable several cables from 2 to 17 mm diameter to be installed in the DES splittable frame.

The 2X and 4X\* versions allow multiple cables in the same grommet.

**SPP ATEX series can be used in zone 2 and 22.**

**Material:** TPE, halogens and silicones free

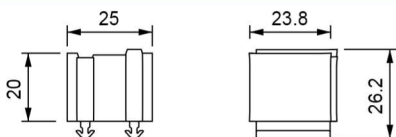
**Flammability:** self-extinguishing acc. to UL94-V0 (grey or black)

**Temperature:** -40°C... +110°C (static)

### RELATED PRODUCTS

- DES 24
- DES 16
- DES 10
- DES Q
- DESPRED
- DESCLICK
- DES 24M
- DES 24MX
- DES 16M
- DES 16MX

### Dimensions (mm)



\* Indoor only

Model	Code	Ø Cable (mm)	Model	Code	Pcs (/pack)
□			■		
SPP 0GA	1731320100	"Blind"	SPP 0BA	1731320200	10
SPP 2GA	1731320102	2-3	SPP 2BA	1731320202	
SPP 3GA	1731320103	3-4	SPP 3BA	1731320203	
SPP 4GA	1731320104	4-5	SPP 4BA	1731320204	
SPP 5GA	1731320105	5-6	SPP 5BA	1731320205	
SPP 6GA	1731320106	6-7	SPP 6BA	1731320206	
SPP 7GA	1731320107	7-8	SPP 7BA	1731320207	
SPP 8GA	1731320108	8-9	SPP 8BA	1731320208	
SPP 9GA	1731320109	9-10	SPP 9BA	1731320209	
SPP 10GA	1731320110	10-11	SPP 10BA	1731320210	
SPP 11GA	1731320111	11-12	SPP 11BA	1731320211	
SPP 12GA	1731320112	12-13	SPP 12BA	1731320212	
SPP 13GA	1731320113	13-14	SPP 13BA	1731320213	
SPP 14GA	1731320114	14-15	SPP 14BA	1731320214	
SPP 15GA	1731320115	15-16	SPP 15BA	1731320215	
SPP 16GA	1731320116	16-17	SPP 16BA	1731320216	

□□			■■		
SPP 2x2GA	1731320304	2 x 2	SPP 2x2BA	1731320404	10
SPP 2x3GA	1731320306	2 x 3	SPP 2x3BA	1731320406	
SPP 2x4GA	1731320308	2 x 4	SPP 2x4BA	1731320408	
SPP 2x5GA	1731320310	2 x 5	SPP 2x5BA	1731320410	
SPP 2x6GA	1731320312	2 x 6	SPP 2x6BA	1731320412	
SPP 2x7GA	1731320314	2 x 7	SPP 2x7BA	1731320414	
SPP 2x8GA	1731320316	2 x 6	SPP 2x8BA	1731320416	

□□□			■■□		
SPP 4x2GA	1731320318	4 x 2	SPP 4x2BA	1731320418	10
SPP 4x3GA	1731320320	4 x 3	SPP 4x3BA	1731320420	
SPP 4x4GA	1731320322	4 x 4	SPP 4x4BA	1731320422	
SPP 4x5GA	1731320324	4 x 5	SPP 4x5BA	1731320424	
SPP 4x6GA	1731320326	4 x 6	SPP 4x6BA	1731320426	



IP66

NEMA 12, 4X\*

UL TYPE 12, 4X



ECOLAB



RoHS COMPLIANT





# SPG ATEX



## DES grommets - large



### FEATURES

- Grommets for cables with and without connectors or for corrugated pipes from 17 to 35 mm diameter
- 2 blind versions available
- UL94-V0 for both grey and black

The SPG grommets are designed for cables with or without connectors or for corrugated pipes with diameter from 17 to 35mm.

**SPG ATEX series can be used in zone 2 and 22.**

**Material:** TPE, halogens and silicones free

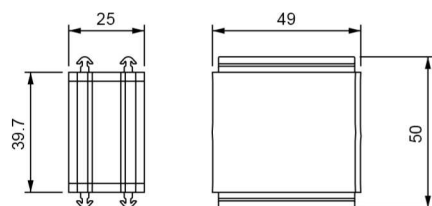
**Flammability:** self-extinguishing acc. to UL94-V0 (grey or black)

**Temperature:** -40°C... +110°C (static)

### RELATED PRODUCTS

- DES 24
- DES 16
- DES 10
- DES Q
- DESPRED
- DESCLICK
- DES 24M
- DES 24MX
- DES 16M
- DES 16MX

### Dimensions (mm)



\* Indoor only

Model	Code	Ø Cable min/max (mm)	Model	Code	Pcs (/pack)
<b>SPG 0GA</b>	1731322000	"Blind"	<b>SPG 0BA</b>	1731322020	
<b>SPG 17GA</b>	1731322117	17-18	<b>SPG 17BA</b>	1731322217	
<b>SPG 18GA</b>	1731322118	18-19	<b>SPG 18BA</b>	1731322218	
<b>SPG 19GA</b>	1731322119	19-20	<b>SPG 19BA</b>	1731322219	
<b>SPG 20GA</b>	1731322120	20-21	<b>SPG 20BA</b>	1731322220	
<b>SPG 21GA</b>	1731322121	21-22	<b>SPG 21BA</b>	1731322221	
<b>SPG 22GA</b>	1731322122	22-23	<b>SPG 22BA</b>	1731322222	
<b>SPG 23GA</b>	1731322123	23-24	<b>SPG 23BA</b>	1731322223	
<b>SPG 24GA</b>	1731322124	24-25	<b>SPG 24BA</b>	1731322224	
<b>SPG 25GA</b>	1731322125	25-26	<b>SPG 25BA</b>	1731322225	10
<b>SPG 26GA</b>	1731322126	26-27	<b>SPG 26BA</b>	1731322226	
<b>SPG 27GA</b>	1731322127	27-28	<b>SPG 27BA</b>	1731322227	
<b>SPG 28GA</b>	1731322128	28-29	<b>SPG 28BA</b>	1731322228	
<b>SPG 29GA</b>	1731322129	29-30	<b>SPG 29BA</b>	1731322229	
<b>SPG 30GA</b>	1731322130	30-31	<b>SPG 30BA</b>	1731322230	
<b>SPG 31GA</b>	1731322131	31-32	<b>SPG 31BA</b>	1731322231	
<b>SPG 32GA</b>	1731322132	32-33	<b>SPG 32BA</b>	1731322232	
<b>SPG 33GA</b>	1731322133	33-34	<b>SPG 33BA</b>	1731322233	
<b>SPG 34GA</b>	1731322134	34-35	<b>SPG 34BA</b>	1731322234	



IP66

NEMA 12, 4X\*

UL TYPE 12, 4X



ECOLAB



RoHS COMPLIANT



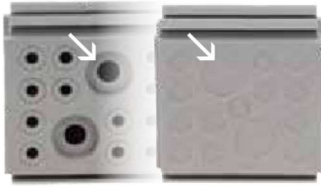


# SPG M ATEX



DES grommets - large - for cables without connectors, with double membrane

Double parallel membrane



## FEATURES

- Multiple grommets for high number of cables without connectors
- Grey and black colours available
- UL94-V0 for both colours
- Strain relief according to EN 62444

The SPG M grommets enable a high number of cables to be installed in the DES splittable frames.

The cable is pushed through the front membrane, whilst the second membrane increases the strain relief and liquid resistance.

**SPG M ATEX series can be used in zone 2 and 22.**

**Material:** TPE, halogens and silicones free

**Flammability:** self-extinguishing acc. to UL94-V0 (grey or black)

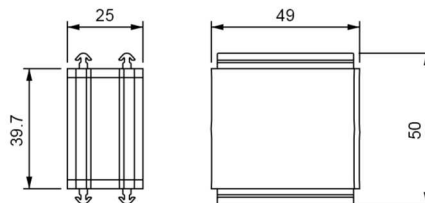
**Temperature:** -40°C... +110°C (static)

Model	Code	Nr. Cables	Ø Cable min/max (mm)	Pcs (/pack)
<b>SPG M7GA</b>	1731322307	4	max. 13,5	10
<b>SPG M7BA</b>	1731322407	2	max. 5	
<b>SPG M9GA</b>	1731322309	1	max. 9,5	
<b>SPG M9BA</b>	1731322409	9	max. 8	
<b>SPG M14GA</b>	1731322314	12	max. 6,5	
<b>SPG M14BA</b>	1731322414	2	max. 12	
<b>SPG M15GA</b>	1731322315	15	max. 7	
<b>SPG M15BA</b>	1731322415			

## RELATED PRODUCTS

- DES 24
- DES 16
- DES 10
- DES Q
- DESPRE D
- DESCLICK
- DES 24M
- DES 24MX
- DES 16M
- DES 16MX

## Dimensions (mm)



\* Indoor only



IP66

NEMA 12, 4X\*



ECOLAB



RoHS COMPLIANT





# DES PDM 24 ATEX



## Cable entry plates with internal frame and double membrane



### FEATURES

- For large number of cables without connectors
- High strain relief thanks to the double membrane
- Cost efficient solution
- IP66 and Nema 4X\* certified
- Threaded inserts or plastic rivets version on request

The DES PDM 24 is an innovative alternative to standard cable glands on electrical, electronic and telecommunication cabinets and equipment. The cable is pushed through the front membrane, whilst the second membrane increases the strain relief and liquid resistance.

**DES PDM 24 ATEX series can be used in zone 2 and 22.**

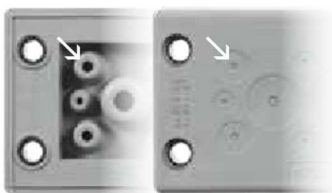
**Material:** TPE, halogens and silicones free

**Flammability:** self-extinguishing acc. to UL94-V0

**Temperature:** -40°C... +110°C (static)

### RELATED PRODUCTS

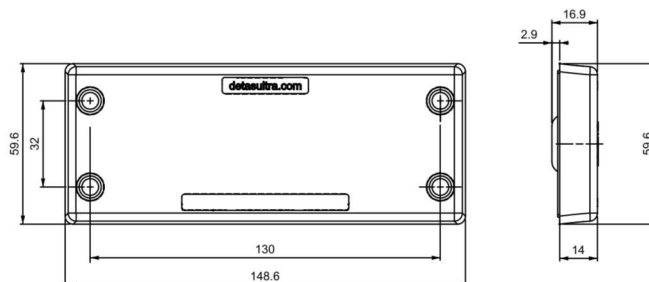
- IFP plugs (page 92)
- DES PDM caps (page 92)
- HY360 hydraulic punch driver (page 139)
- PF/PFX cable entry system plates (from page 140)



Double parallel membrane

	Model	Code	Nr. cables	Ø Cable min/max (mm)	Dimensions (mm)		Pcs (/pack)
					Cut-out	Plate	
NEW	DES PDM 24A/3G	1732312403	3	18 / 26	112 x 36	148,6 x 59,6	10
	DES PDM 24A/12G	1732312412	12	9 / 16			
	DES PDM 24A/14G	1732312414	10 4	2,8 / 6,5 14,5 / 22			
	DES PDM 24A/15G	1732312415	15	6,8 / 12			
	DES PDM 24A/16G	1732312416	8 4 2 2	2,8 / 6,5 4,4 / 9,7 8,6 / 16,2 14,5 / 22			
DES PDM 24A/17G	1732312417	6 6 5	2,8 / 6,5 4,6 / 10,2 8,6 / 16,2				
DES PDM 24A/25G	1732312425	12 7 6	2,8 / 6,5 4,4 / 9,7 6,8 / 12				
NEW	DES PDM 24A/26G	1732312426	26	4,6 / 10			
	DES PDM 24A/32G	1732312432	21 8 3	2,8 / 6,5 4,6 / 10,2 6,8 / 12			
	DES PDM 24A/42G	1732312442	42	2,8 / 6,5			
	DES PDM 24A/124G	1732312445	120 4	1,75/4,7 2,3/6			

### Dimensions (mm)



\* Indoor only



IP66

NEMA 12, 4X\*

UL TYPE 12, 4X



ECOLAB



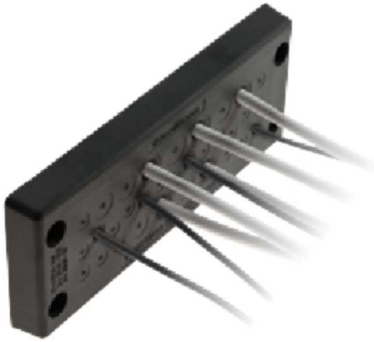
RoHS COMPLIANT





# DES PDM 24 ATEX

Cable entry plates with internal frame and double membrane



## FEATURES

- For large number of cables without connectors
- High strain relief thanks to the double membrane
- Cost efficient solution
- IP66 and Nema 4X\* certified
- Threaded inserts or plastic rivets version on request

The DES PDM 24 is an innovative alternative to standard cable glands on electrical, electronic and telecommunication cabinets and equipment. The cable is pushed through the front membrane, whilst the second membrane increases the strain relief and liquid resistance.

**DES PDM 24 ATEX series can be used in zone 2 and 22.**

**Material:** TPE, halogens and silicones free

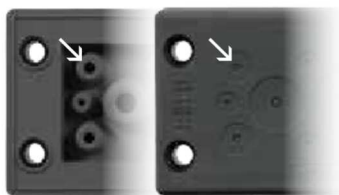
**Flammability:** self-extinguishing acc. to UL94-V0

**Temperature:** -40°C... +110°C (static)

Model	Code	Nr. Cables	Ø Cable min/max (mm)	Dimensions (mm)		Pcs (/pack)
				Cut-out	Plate	
<b>NEW</b> DES PDM 24A/3B	1732313403	3	18 / 26	112 x 36	148,6 x 59,6	10
DES PDM 24A/12B	1732313412	12	9 / 16			
DES PDM 24A/14B	1732313414	10 4	2,8 / 6,5 14,5 / 22			
DES PDM 24A/15B	1732313415	15	6,8 / 12			
DES PDM 24A/16B	1732313416	8	2,8 / 6,5			
		4	4,4 / 9,7			
		2	8,6 / 16,2			
DES PDM 24A/17B	1732313417	2	14,5 / 22			
		6	2,8 / 6,5			
		6	4,6 / 10,2			
DES PDM 24A/25B	1732313425	5	8,6 / 16,2			
		12	2,8 / 6,5			
NEW DES PDM 24A/26B	1732313426	7	4,4 / 9,7			
		6	6,8 / 12			
		26	4,6 / 10			
DES PDM 24A/32B	1732313432	21	2,8 / 6,5			
		8	4,6 / 10,2			
		3	6,8 / 12			
DES PDM 24A/42B	1732313442	42	2,8 / 6,5			

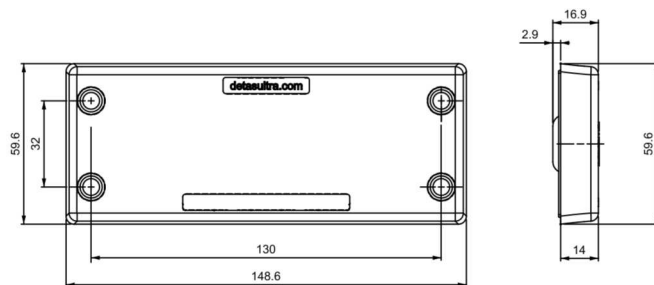
## RELATED PRODUCTS

- IFP plugs (page 92)
- DES PDM caps (page 92)
- HY360 hydraulic punch driver (page 139)
- PF/PFX cable entry system plates (from page 140)



Double parallel membrane

## Dimensions (mm)



\* Indoor only



IP66

NEMA 12, 4X\*

UL TYPE 12, 4X



ECOLAB



RoHS COMPLIANT





# DES PDM S ATEX



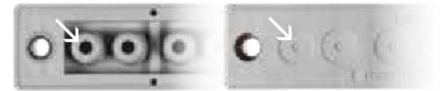
## Cable entry plates with internal frame and double membrane

### FEATURES

- For several number of cables in a limited space
- High strain relief thanks to the double membrane
- Cost efficient solution
- High IP grade (IP66)
- Threaded inserts or plastic rivets version on request



Double parallel membrane



The DES PDM S is an innovative alternative to standard cable glands on electrical, electronic and telecommunication cabinets and equipment.

The cable is pushed through the front membrane, whilst the second membrane increases the strain relief and liquid resistance.

**DES PDM S ATEX series can be used in zone 2 and 22.**

**Material:** TPE, halogens and silicones free

**Flammability:** self-extinguishing acc. to UL94-V0

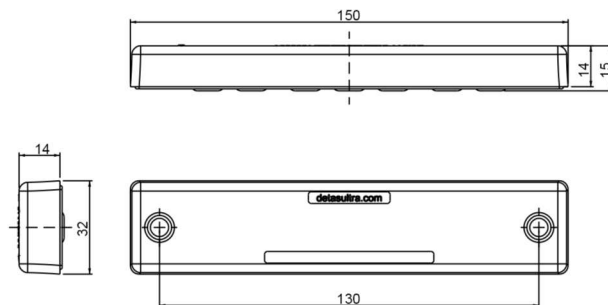
**Temperature:** -40°C... +110°C (static)

### RELATED PRODUCTS

- IFP plugs (page 92)
- DES PDM caps (page 92)

Model	Code	Nr. Cables	Ø Cable min/max (mm)	Dimensions (mm)		Pcs (/pack)
				Cut-out	Plate	
DES PDM S 112A/7G	1732321127	7	6,8 / 12	112x18	150 x 32	10
DES PDM S 112A/22G	1732321122	22	3,2 / 6,5			
DES PDM S 112A/7B	1732322127	7	6,8 / 12			
DES PDM S 112A/22B	1732322122	22	3,2 / 6,5			

### Dimensions (mm)



IP66

NEMA 12

UL TYPE 12



ECOLAB



RoHS COMPLIANT





# DES PDM Q ATEX



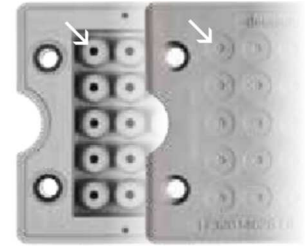
Cable entry plates with internal frame and double membrane

## FEATURES

- For large number of cables without connectors
- High strain relief thanks to the double membrane
- Cost efficient solution
- IP66 and Nema 4X\* certified
- Threaded inserts or plastic rivets version on request



Double parallel membrane



The DES PDM Q is an innovative alternative to standard cable glands on electrical, electronic and telecommunication cabinets and equipment.

The cable is pushed through the front membrane, whilst the second membrane increases the strain relief and liquid resistance.

**DES PDM Q ATEX series can be used in zone 2 and 22.**

**Material:** TPE, halogens and silicones free

**Flammability:** self-extinguishing acc. to UL94-V0

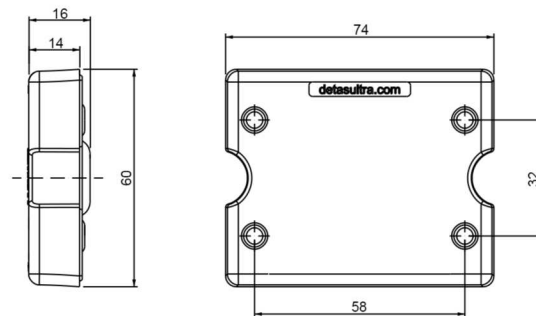
**Temperature:** -40°C... +110°C (static)

## RELATED PRODUCTS

- IFP plugs (page 92)
- DES PDM caps (page 92)
- HY360 hydraulic punch driver (page 139)

Model	Code	Nr. Cables	Ø Cable min/max (mm)	Dimensions (mm)		Pcs (/pack)
				Cut-out	Plate	
DES PDM Q 13GA	1732314613	8	2,8 / 6,5	46 x 46	74 x 60	10
		4	4,6 / 10,2			
		1	14,5 / 22			
DES PDM Q 17GA	1732314617	10	2,8 / 6,5			
		4	4,6 / 10,2			
		2	6,8 / 12			
		1	8,6 / 16,2			
DES PDM Q 25GA	1732314625	25	2,8 / 6,5			
DES PDM Q 13BA	1732315614	8	2,8 / 6,5			
		4	4,6 / 10,2			
		1	14,5 / 22			
DES PDM Q 17BA	1732315618	10	2,8 / 6,5			
		4	4,6 / 10,2			
		2	6,8 / 12			
		1	8,6 / 16,2			
DES PDM Q 25BA	1732315626	25	2,8 / 6,5			

## Dimensions (mm)



\* Indoor only



IP66

NEMA 12, 4X\*

UL TYPE 12, 4X



ECOLAB



RoHS COMPLIANT





# DES PDMU ATEX



## Round cable entry plates for single cable - internal frame and double membrane

### FEATURES

- Metric sized
- High retaining force thanks to the double membrane
- Cost efficient solution
- High IP grade (IP66) Nema 4X\*
- Recommended tightening torque 8 Nm

The cable entry plates series DES PDMU are used to save space and time as alternative to cable glands. They use the metric holes on cabinets or machinery and the nutlock guarantees a strong strain relief and highest water and dust protection.

The cable is pushed through the front membrane, whilst the second membrane increases the strain relief and liquid resistance.

**DES PDMU ATEX series can be used in zone 2 and 22.**

**Material:** TPE, halogens and silicones free

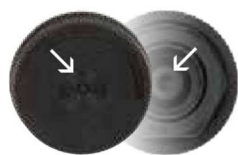
**Flammability:** self-extinguishing acc. to UL94-V0

**Temperature:** -40°C... +110°C (static)

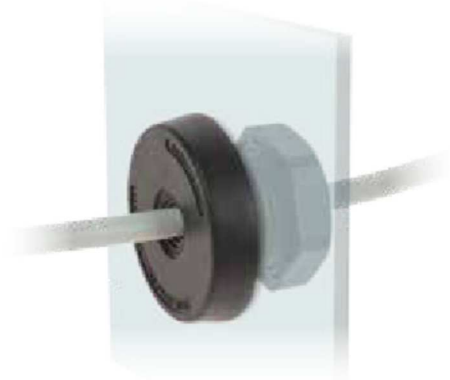
### RELATED PRODUCTS

- IFP plugs (page 92)
- HY360 hydraulic punch driver (page 139)

Double parallel membrane



\* Indoor only

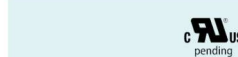
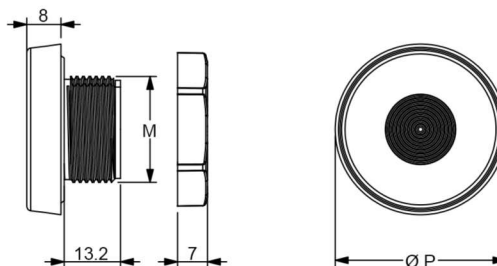


Model	Code	Nr. Cables	Ø max (mm)	Thread	Dimensions (mm)		Pcs (/pack)
					Cut-out	Plate	

DES PDMU 20GA	1732330120	1	10,5	M20	20,5	36	
DES PDMU 25GA	1732330125	1	16	M25	25,5	40	10
DES PDMU 32GA	1732330132	1	22	M32	32,5	46	

DES PDMU 20BA	1732331120	1	10,5	M20	20,5	36	
DES PDMU 25BA	1732331125	1	16	M25	25,5	40	10
DES PDMU 32BA	1732331132	1	22	M32	32,5	46	

### Dimensions (mm)



IP66

up to NEMA 12, 4X\*

UL TYPE 12, 4X



ECOLAB



RoHS COMPLIANT

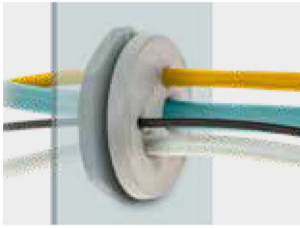




# DES PDM M ATEX



## Round cable entry plates with internal frame and double membrane



Double parallel membrane

### FEATURES

- For large number of cables without connectors
- High strain relief thanks to the double membrane
- Cost-effective solution
- High IP grade (IP66-68), Nema 4X\*
- Recommended tightening torque 8Nm

The cable entry plates series DES PDM M are used to save space and time as alternative to cable glands. They use the metric holes on cabinets or machinery and the nutlock guarantees a strong strain relief and highest water and dust protection. The cable is pushed through the front membrane, whilst the second membrane increases the strain relief and liquid resistance.

**DES PDM M ATEX series can be used in zone 2 and 22.**

**Material:** TPE, halogens and silicones free

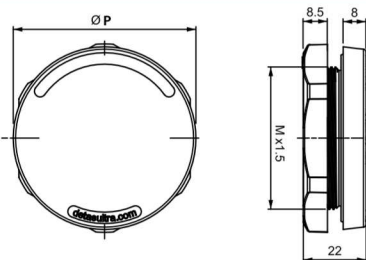
**Flammability:** self-extinguishing acc. to UL94-V0

**Temperature:** -40°C... +110°C (static)

### RELATED PRODUCTS

- IFP plugs (page 92)
- HY360 hydraulic punch driver (page 139)

### Dimensions (mm)



Model	Code	Nr. Cables	Ø Cable min / max (mm)	M x 1,5	Dimensions		Pcs (/pack)
					Ø P (mm)	H (mm)	
DES PDM M20A/2G	1732332002	2	2 / 5,5	M20	36	7	10
DES PDM M20A/3G	1732332003	3	2 / 5				
DES PDM M20A/4G	1732332004	4	2 / 4,5				
DES PDM M25A/4G	1732333204	3	2,6 / 6,5	M25	41	7	
DES PDM M25A/6G	1732333506	6	2,2 / 5				
DES PDM M32A/4G	1732333204	3	2,6 / 6,5	M32	46	7	
DES PDM M32A/4-2G	1732333242	4	3,5 / 8,8				
DES PDM M32A/7G	1732333207	7	2,6 / 6,5				
DES PDM M40A/8G	1732334008	4	2,6 / 6,5	M40	54	7	
DES PDM M40A/12G	1732334012	12	2 / 6				
DES PDM M50A/8G	1732335008	5	4,6 / 10,2	M50	64	8,5	
DES PDM M50A/10G	1732335010	7	2,8 / 6,5				
DES PDM M50A/12G	1732335012	2	4,6 / 10,2				
DES PDM M50A/19G	1732335019	1	14,5 / 22				
DES PDM M63A/6G	1732336306	3	4,6 / 10,2				
DES PDM M63A/9G	1732336309	3	2,6 / 6	M63	77	8,5	
DES PDM M63A/13G	1732336313	4	4,6 / 10,2				
DES PDM M63A/14G	1732336314	4	8,6 / 16,2				
DES PDM M63A/14G	1732336314	5	10,9 / 20				
DES PDM M63A/35G	1732336335	14	2,8 / 6				
DES PDM M63A/35G	1732336335	35	4,6 / 10,2				
DES PDM M63A/35G	1732336335	35	9,5 / 16,2				
DES PDM M63A/35G	1732336335	35	5 / 10				
DES PDM M63A/35G	1732336335	35	2,6 / 5,5				

\* Indoor only



IP66  
IP68

NEMA  
12, 4X\*

UL TYPE  
12, 4X

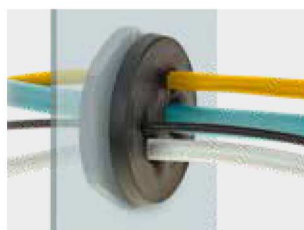




# DES PDM M ATEX



## Round cable entry plates with internal frame and double membrane



Double parallel membrane



### FEATURES

- For large number of cables without connectors
- High strain relief thanks to the double membrane
- Cost-effective solution
- High IP grade (IP66-68), Nema 4X\*
- Recommended tightening torque 8Nm

The cable entry plates series DES PDM M are used to save space and time as alternative to cable glands. They use the metric holes on cabinets or machinery and the nutlock guarantees a strong strain relief and highest water and dust protection. The cable is pushed through the front membrane, whilst the second membrane increases the strain relief and liquid resistance.

**DES PDM M ATEX series can be used in zone 2 and 22.**

**Material:** TPE, halogens and silicones free

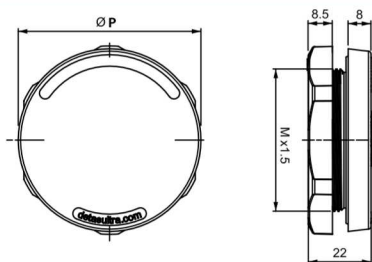
**Flammability:** self-extinguishing acc. to UL94-V0

**Temperature:** -40°C... +110°C (static)

### RELATED PRODUCTS

- IFP plugs (page 92)
- HY360 hydraulic punch driver (page 139)

### Dimensions (mm)



Model	Code	Nr. Cables	Ø Cable min / max (mm)	M x 1,5	Dimensions		Pcs (/pack)
					Ø P (mm)	H (mm)	
DES PDM M20A/2B	1732333005	2	2 / 5,5	M20	36	7	10
DES PDM M20A/3B	1732333006	3	2 / 5				
DES PDM M20A/4B	1732333007	4	2 / 4,5				
DES PDM M25A/4B	1732333007	3	2,6 / 6,5	M25	41	7	
DES PDM M25A/6B	1732333507	6	2,2 / 5				
DES PDM M32A/4B	1732334205	3	2,6 / 6,5	M32	46	7	
DES PDM M32A/4-2B	1732334252	4	3,5 / 8,8				
DES PDM M32A/7B	1732334208	7	2,6 / 6,5				
DES PDM M40A/8B	1732335009	4	2,6 / 6,5	M40	54	7	
DES PDM M40A/12B	1732335007	12	2 / 6				
DES PDM M50A/8B	1732336009	5	4,6 / 10,2	M50	64	8,5	
DES PDM M50A/10B	1732336011	7	2,8 / 6,5				
DES PDM M50A/12B	1732336013	2	4,6 / 10,2				
DES PDM M50A/19B	1732336020	1	14,5 / 22				
DES PDM M63A/6B	1732337307	3	4,6 / 10,2				
DES PDM M63A/9B	1732337310	3	2,6 / 6	M63	77	8,5	
DES PDM M63A/13B	1732337314	4	4,6 / 10,2				
DES PDM M63A/14B	1732337315	4	8,6 / 16,2				
DES PDM M63A/14B	1732337315	5	10,9 / 20				
DES PDM M63A/35B	1732337336	14	2,8 / 6				
DES PDM M63A/35B	1732337336	35	4,6 / 10,2	M63	77	8,5	
DES PDM M63A/35B	1732337336	5	9,5 / 16,2				
DES PDM M63A/14B	1732337315	14	5 / 10	M63	77	8,5	
DES PDM M63A/35B	1732337336	35	2,6 / 5,5				

\* Indoor only



IP66  
IP68

NEMA  
12, 4X\*

UL TYPE  
12, 4X





# DES PDM KN ATEX



Cable entry plate - large frame and double membrane

## FEATURES

- For up to 72 cables without connectors
- High strain relief thanks to the double membrane
- Internal reinforcing frame
- Cost efficient solution
- High IP grade (IP66)



The DES PDM KN are multi cable entry plates suitable for cabinet side or bottom. According to cable size and quantities it is possible to find the right model. The fixing holes are for Rittal cabinets. The cable is pushed through the front membrane, whilst the second membrane increases the strain relief and liquid resistance.

**DES PDM KN ATEX series can be used in zone 2 and 22.**

**Material:** TPE, halogens and silicones free

**Flammability:** self-extinguishing acc. to UL94-V0

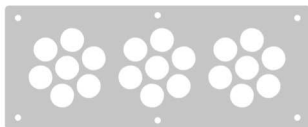
**Temperature:** -40°C... +110°C (static)

## RELATED PRODUCTS

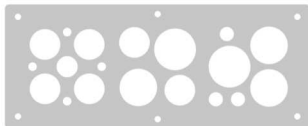
- Tappi IFP (pag. 92)
- DES PDM CAPS (pag. 92)



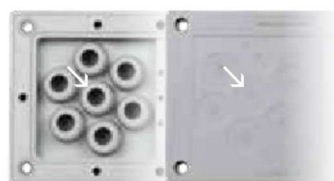
KN/72



KN/21



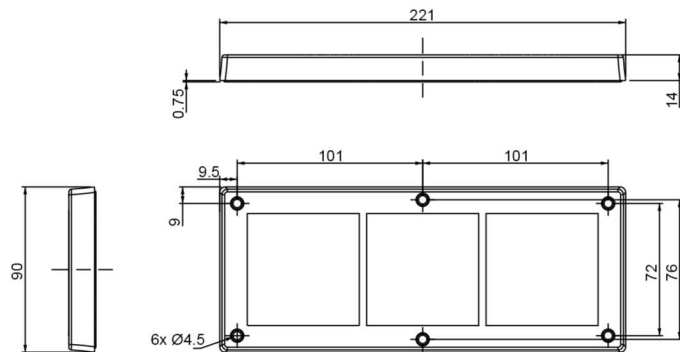
KN/19



Double parallel membrane

Model	Code	Nr. Cables	Ø Cable min/max (mm)	Dimensions (mm)		Pcs (/pack)
				Cut-out	Plate	
DES PDM KN/72GA	1732340072	42	2,8 / 6,5	192 x 62	221 x 90	1
		21	4,6 / 10,2			
		6	8,6 / 16,2			
DES PDM KN/72BA	1732341073	3	14,5 / 22			
DES PDM KN/21GA	1732340021	21	9,5 / 17	192 x 62	221 x 90	1
DES PDM KN/21BA	1732341022					
DES PDM KN/19GA	1732340019	4	3 / 6	192 x 62	221 x 90	1
DES PDM KN/19BA	1732341020	3	5 / 10			
		1	9 / 15			
		6	14 / 22			
		3	19 / 27			
		2	22 / 30			

## Dimensions (mm)



IP66

NEMA 12

UL TYPE 12



ECOLAB



RoHS COMPLIANT





# DES PDP ATEX



## Round base, cone-shaped cable entry plate with locknut

### FEATURES

- For diameters from 2,5 to 64 mm
- Reinforcing base plate
- Cost efficient solution
- UL94-V0 for grey and black

The DES PDP is available in M25, M32, M40, M50, M63 and M75 sizes, enabling non-terminated cables with diameter from 2,5 to 64 mm to pass through the walls of the electrical cabinets.

The reinforcing base plate increases the stability when large cables are used.

**DES PDP ATEX series can be used in zone 2 and 22.**

**Material:** TPE, halogens and silicones free

**Flammability:** self-extinguishing acc. to UL94-V0

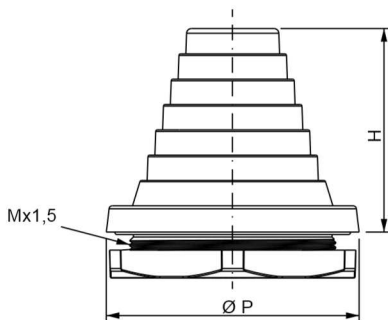
**Temperature:** -40°C... +110°C (static)

### RELATED PRODUCTS

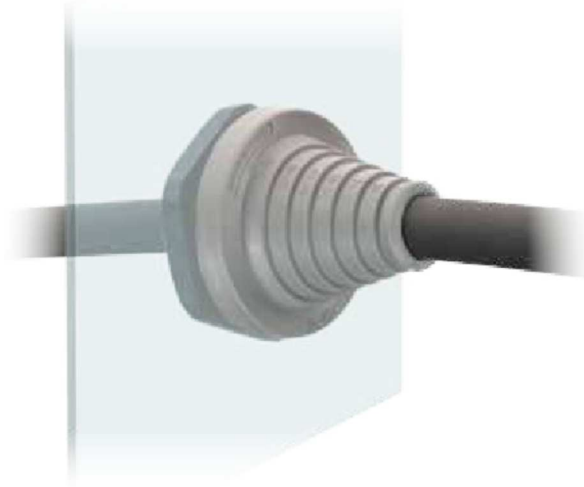
- HY360 hydraulic punch driver (page 139)



### Dimensions (mm)



\* Indoor only



Model	Code	Nr. Cables	Ø Cable min/max (mm)	Thread	Dimensions (mm)			Pcs x conf.
					Cut-out	øP	H	
DES PDP 25GA	1732350025	1	2,5 / 17	M25	25,5	39	46,5	10
DES PDP 32GA	1732350032	1	5 / 23	M32	32,5	46	55,2	
DES PDP 40GA	1732350040	1	8 / 29	M40	40,5	54	62	
DES PDP 50GA	1732350050	1	17 / 42	M50	50,5	64	50	
DES PDP 63GA	1732350063	1	23 / 55	M63	63,5	77	62	
DES PDP 75GA	1732350075	1	38 / 64	M75	75,5	89	64	

Model	Code	Nr. Cables	Ø Cable min/max (mm)	Thread	Dimensions (mm)			Pcs x conf.
					Cut-out	øP	H	
DES PDP 25BA	1732352025	1	2,5 / 17	M25	25,5	39	46,5	10
DES PDP 32BA	1732352032	1	5 / 23	M32	32,5	46	55,2	
DES PDP 40BA	1732352040	1	8 / 29	M40	40,5	54	62	
DES PDP 50BA	1732352050	1	17 / 42	M50	50,5	64	50	
DES PDP 63BA	1732352063	1	23 / 55	M63	63,5	77	62	
DES PDP 75BA	1732352075	1	38 / 64	M75	75,5	89	64	



up to IP66

up to NEMA 12, 4X\*

UL TYPE 12



ECOLAB



RoHS COMPLIANT





# DES PDPS ATEX



## Round base, cone-shaped cable entry plate with locknut

### FEATURES

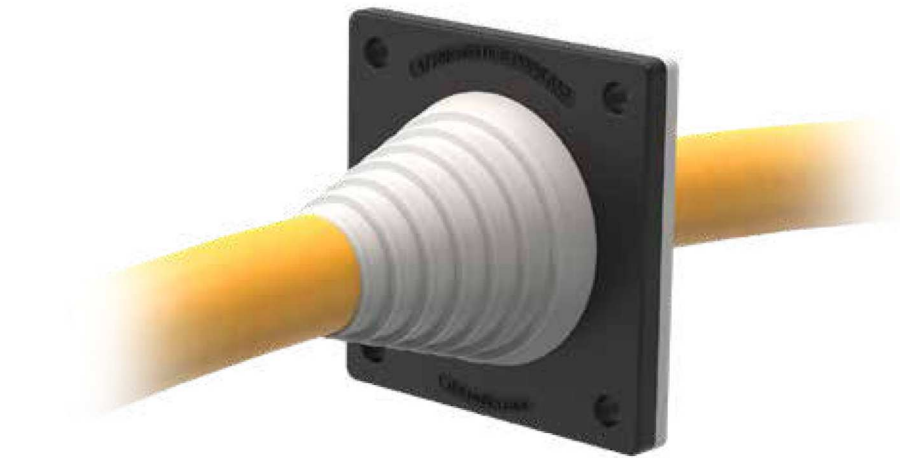
- For diameters from 2,5 to 64 mm
- Reinforcing base plate
- Cost efficient solution
- UL94-V0 for grey and black
- ATEX version on request (Group 7)

The DES PDPS ATEX is available in M63 and M75 sizes, enabling non-terminated cables with diameter from 23 to 64 mm to pass through the walls of the electrical cabinets. The installation of the PDPS is made from the front part, not needing to screw a nut from the opposite part of the wall. The reinforced base plate increases the stability when large cables are used. **DES PDPS ATEX series can be used in zone 2 and 22.**

**Material:** TPE+PA, halogens and silicones free

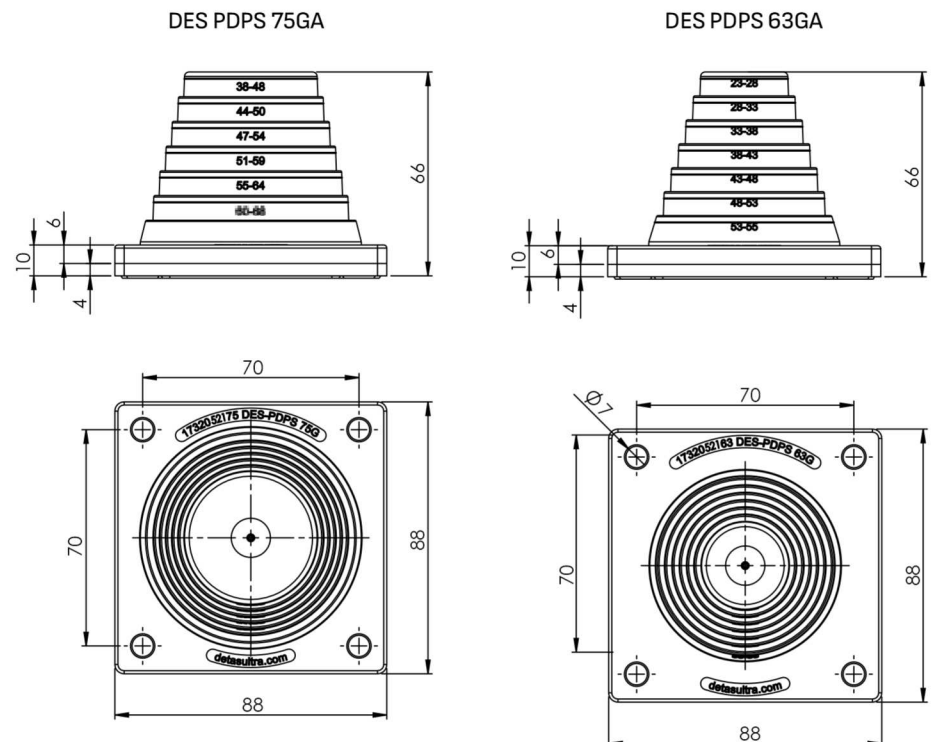
**Flammability:** self-extinguishing acc. to UL94-V0

**Temperature:** -40°C... +110°C (static)



Model	Code	Nr. Cables	Ø Cable min/max (mm)	Thread	Dimensions (mm)		Pcs x conf.
					Base	Height	
DES PDPS 63GA	1732352080	1	23 / 55	M63	70 x 88	66	10
DES PDPS 75GA	1732352090	1	38 / 64	M75	70 x 88	66	

### Dimensions (mm)



### RELATED PRODUCTS

- HY360 hydraulic punch driver (page 139)

\* Indoor only



up to IP66

up to NEMA 12, 4X\*

UL TYPE 12



ECOLAB

UL94-V0



RoHS COMPLIANT





# SPP P ATEX



## SPP multi-range grommets with pyramidal shape

### FEATURES

- Universal solution for cables without connectors from 3 to 14mm diameter
- Can be used on all DES Frames and divisible cable glands
- IP66
- UL94-V0 for both grey and black colors





The SPP P ATEX grommets are suitable for cables without connectors. They are used cutting the cone corresponding to the diameter of the cable. The cable is then routed into the grommet where the internal shape is increasing the strain relief. Is it also possible to secure the cable with a cable tie. **SPP P ATEX series can be used in zone 2 and 22.**

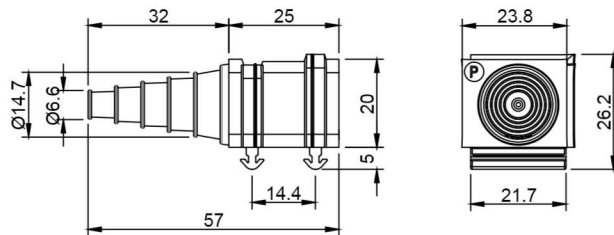
**Material:** TPE, halogens and silicones free

**Flammability:** self-extinguishing acc. to UL94-V0

**Temperature:** -40°C... +110°C (static)

Model	Code	Ø Cable min/max (mm)	Pcs (/pack)
 SPP PGA	1731320650	3 - 14	10
 SPP PBA	1731320652		

### Dimensions (mm)



### RELATED PRODUCTS

- DES 24
- DES 16
- DES 10
- DES Q
- DESPRED

\* Indoor only



IP66

NEMA 12, 4X\*

UL TYPE 12, 4X



ECOLAB



RoHS COMPLIANT





# SPG P ATEX



## SPP multi-range grommets with pyramidal shape

### FEATURES

- Universal solution for cables without connectors from 17 to 33 mm diameter
- Can be used on all DES Frames and divisible cable glands
- IP66
- UL94-V0 for both grey and black colors



The SPG P ATEX grommets are suitable for cables without connectors. They are used cutting the cone corresponding to the diameter of the cable. The cable is then routed into the grommet where the internal shape is increasing the strain relief.

Is it also possible to secure the cable with a cable tie.

**SPG P ATEX series can be used in zone 2 and 22.**

**Material:** TPE, halogens and silicones free

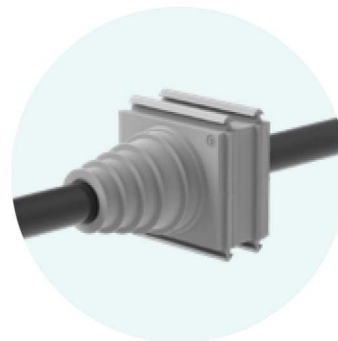
**Flammability:** self-extinguishing acc. to UL94-V0

**Temperature:** -40°C... +110°C (static)

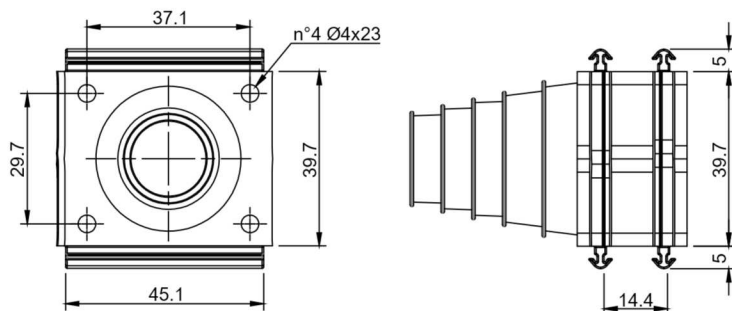
### RELATED PRODUCTS

- DES FRAMES
- DESPRED

Model	Code	Thread	Pcs (/pack)
 <b>SPG PGA</b>	1731320745	17 - 33	10
 <b>SPG PBA</b>	1731320748		10



### Dimensions (mm)



\* Indoor only



IP66

NEMA 12, 4X\*



ECOLAB



RoHS COMPLIANT

